

# 2023 SUZUKI GENUINE MARINE PARTS AND ACCESSORIES



Please read your Owner's Manual carefully. Remember, boating and alcohol or other drugs don't mix. Always wear a personal flotation device when boating. Please operate your outboard safely and responsibly.

Suzuki encourages all users to operate their boats safely, responsibly, and with respect for the marine environment.

Specifications, appearances, equipment, colours, material and other items of "SUZUKI" products shown in this catalogue are subject to change by the manufacturers at any time without prior notice and may vary depending on local conditions or requirements. Some models and items are not available in some territories. Each model or item might be discontinued without notice. Please contact SMC for details of such changes. Actual body or item colour might differ from the colours in this catalogue.



300 TAKATSUKA-CHO, MINAMI-KU, HAMAMATSU-SHI, SHIZUOKA 432-8611 JAPAN  
www.globalsuzuki.com

2023 SUZUKI GENUINE MARINE P & A  
99090-4888M-502



Internal use only



# INDEX

## OPERATION SYSTEMS (04-53)

- 04 SYNCRO-EYE
- 06 SUZUKI PRECISION CONTROL
- 16 MECHANICAL REMOTE CONTROL
- 30 KEYLESS START SYSTEM
- 32 SUZUKI MULTI-FUNCTION GAUGE (SMG4)
- 40 FishHunter™ Drive
- 42 SUZUKI MULTI-FUNCTION DISPLAY
- 44 SUZUKI DIAGNOSTIC SYSTEM MOBILE PLUS
- 46 ANALOGUE INSTRUMENT
- 48 STEERING
- 50 ELECTRICAL PARTS
- 52 FUEL SYSTEM

## SUZUKI PROPELLERS (54-57)

- 54 WATERGRIP
- 56 PROPELLER LINE-UP

## MAINTAINING YOUR SUZUKI (58-63)

- 58 ECSTAR
- 60 CARE & MAINTENANCE ITEM
- 62 MAINTENANCE KITS

## APPLICATION CHART (64-65)





# Integrated Control System



"SYNCR0-EYE" is a comprehensive system Suzuki has developed which "connects" various devices so that they may work together in synchronization. This innovative system will also improve the control technology of the boat by "sensing" various situations surrounding the boat and be compatible with future technologies.







# SUZUKI PRECISION CONTROL

Drive By Wire (Suzuki Precision Control : S.P.C) is a technologically advanced computer-based control system with electronic wiring that eliminates the source of friction and resistance. While you enjoy smooth throttle and shift operation, the system's computer is processing and transmitting commands in real-time to actuators at the engine that deliver precise throttle controls with smoother, decisive shifting.

The Drive-By-Wire system features:

- Control of up to 6 OBM units.
- Automatic Trim available by using SMD or SMG4.

Find out more here:



\*QR code is a registered trademark of DENSO WAVE.

## Remote Control Box

- Integrated SELECT and THROTTLE ONLY switches.
- 1-lever operation for multiple outboards (Dual Top Mount).



Single Top Mount



Dual Top Mount



Flush Mount

Integrated emergency stop switch  
(Flush Mount Only)

## Switch Panels

- Mounting bolts concealed for a smooth, luxurious finish.
  - 1 action start/stop for multi-installation boats.  
(Engines start in order from port to starboard)
- ⇒ See page 10 for a reference of switch panel selection.





# COMPONENT PARTS

## 1 R/C BOX BINNACLE MOUNT R/C BOX



**67200-98L00-000**  
for Single Engine



**67200-98L10-000**  
for Dual Engine



**67200-98L20-000**  
for Single Engine

## FLUSH MOUNT R/C BOX

## 2 CONTROL PANEL



**37120-98L00-000**  
for Dual Engine



**37120-98L10-000**  
for Triple Engine



**37120-98L20-000**  
for Quadruple Engine  
PORT



**37120-98L30-000**  
for Quadruple Engine,  
Quintuple Engine  
STBD



**37120-98L40-000**  
for Quintuple Engine  
PORT



**37120-98L50-000**  
for Sextuple Engine  
PORT



**37120-98L60-000**  
for Sextuple Engine  
STBD

## 3 BUZZER



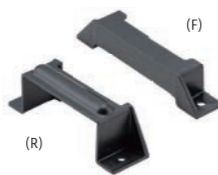
**38500-93J90-000**

## 4 BOAT CONTROL MODULE



**36770-98L01-000**

## BCM HOLDER (F) BCM HOLDER (R)



**36775-98L00-000**  
(F)  
**36776-98L00-000**  
(R)

## BCM CUSHION



**33925-98L00-000**

## 5 TERMINAL RESISTOR



**33926-98L00-000**

## 6 BATTERY LEAD WIRE



**36625-98J10-000**  
2.2m / 7.2ft

**36625-98J20-000**  
6.1m / 20ft

## 7 BCM #1 WIRING HARNESS



**36623-98L00-000**  
for Single Engine

**36623-98L30-000**  
for Dual or Triple  
Engine

**36623-98L40-000**  
for  
Quadruple, Quintuple,  
and Sextuple Engine

## 8 HARNESS, EMERGENCY SWITCH EXTENSION



**36627-98L10-000**  
1.5m / 4.9ft

## 9 SIGNAL CONVERTER UNIT



**37140-98L00-000**

## 10 DUAL STATION WIRING HARNESS



**36622-98L00-000**

## 11 BCM #2 WIRING HARNESS



**36624-98L00-000**  
for Single Engine

**36624-98L10-000**  
for Dual or Triple  
Engine

**36624-98L20-000**  
for Quadruple,  
Quintuple, and  
Sextuple engines

## 12 ENGINE WIRING HARNESS



**36621-98L00-000**

## A MAIN SWITCH PANEL (REGULAR KEY)



**37100-98L10-000**  
Vertical type with  
Emergency stop  
switch



**37100-98L20-000**  
Horizontal type with  
Emergency stop  
switch



**37100-98L00-000**  
Ignition only, use with  
emergency switch



# COMPONENT PARTS

## A MAIN SWITCH PANEL (KEYLESS START SYSTEM)



**37290-98L10-000**  
Vertical type with Emergency stop switch



**37290-98L20-000**  
Horizontal type with Emergency stop switch



**37290-98L00-000**  
Ignition only, use with emergency switch



## B EMERGENCY SWITCH PANEL

**37803-98L00-000**

## C MAIN WIRING HARNESS



**36620-98L00-000**  
6.5m / 21.3ft for control system

**36620-98L10-000**  
9.5m / 31.1ft for control system

## D MAIN WIRING HARNESS EXTENSION

**36620-98L20-000**  
2.0m / 6.5ft for control system

## E TROLL MODE SWITCH PANEL



**37860-98L00-000**

## F R/C BOX HARNESS EXTENSION



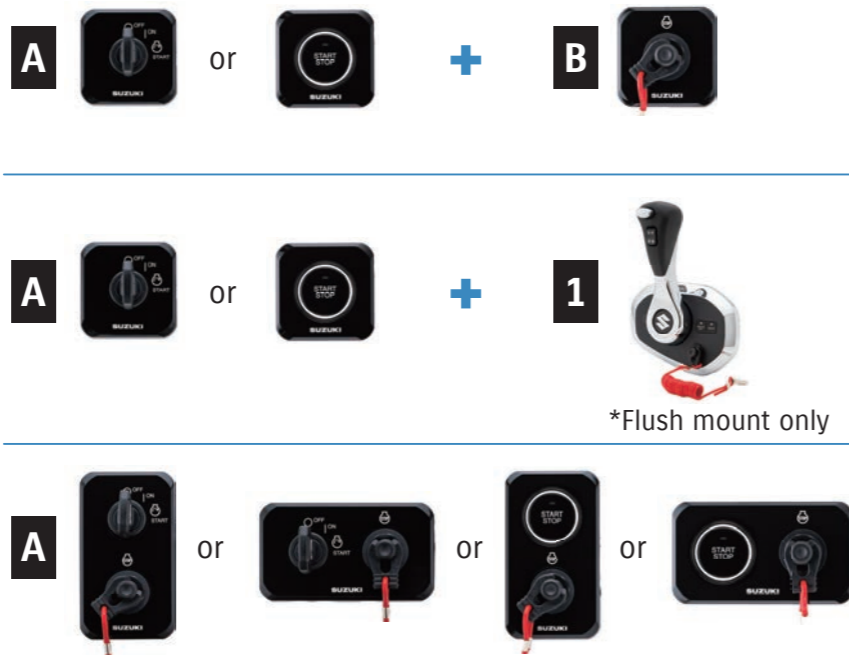
**36627-98L00-000**  
1.0m / 3.2ft

## G HARNESS COMP, CAN EXT



**36627-98L20-000**  
2.0m / 6.5ft for triple engine, and quadruple engine

### Switch Panel Selection Reference



# EXTRA OPTION

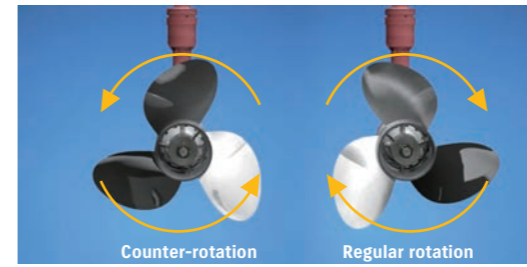
## COUNTER SELECT CONNECTOR



### 36612-98J20-000

Applicable Model DF150AP/175AP/200AP, DF250AP/300AP

Converts to counter rotation specification.



## Suzuki Selective Rotation

In multi-outboard installations on large boats, a counter-rotation outboard is usually paired with a regular rotation model to help keep the boat travelling on an even keel and in a straight line. Suzuki Selective Rotation eliminates the need to purchase a dedicated counter-rotation outboard by using a special switch that turns a regular rotation outboard into a counter-rotation model.

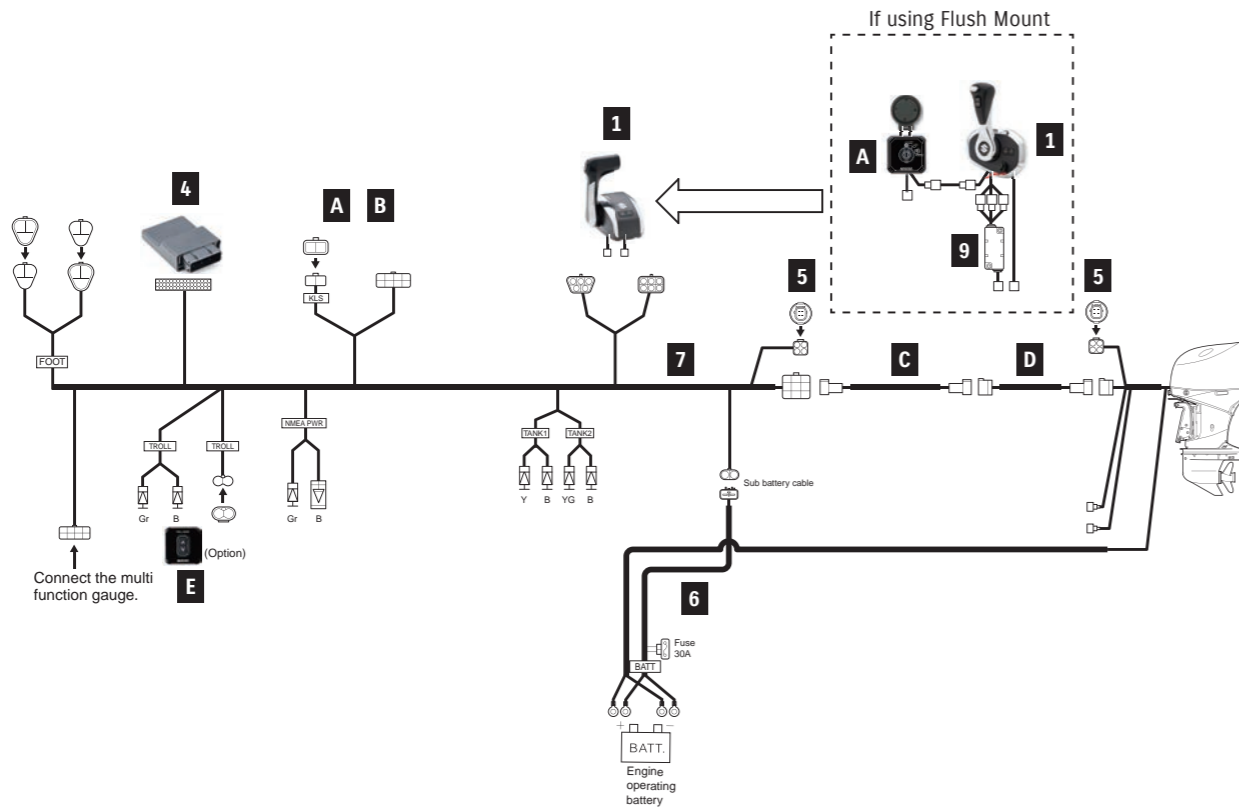
**SUZUKI SELECTIVE ROTATION**





# REMOTE-CONTROL KIT

## SINGLE ENGINE

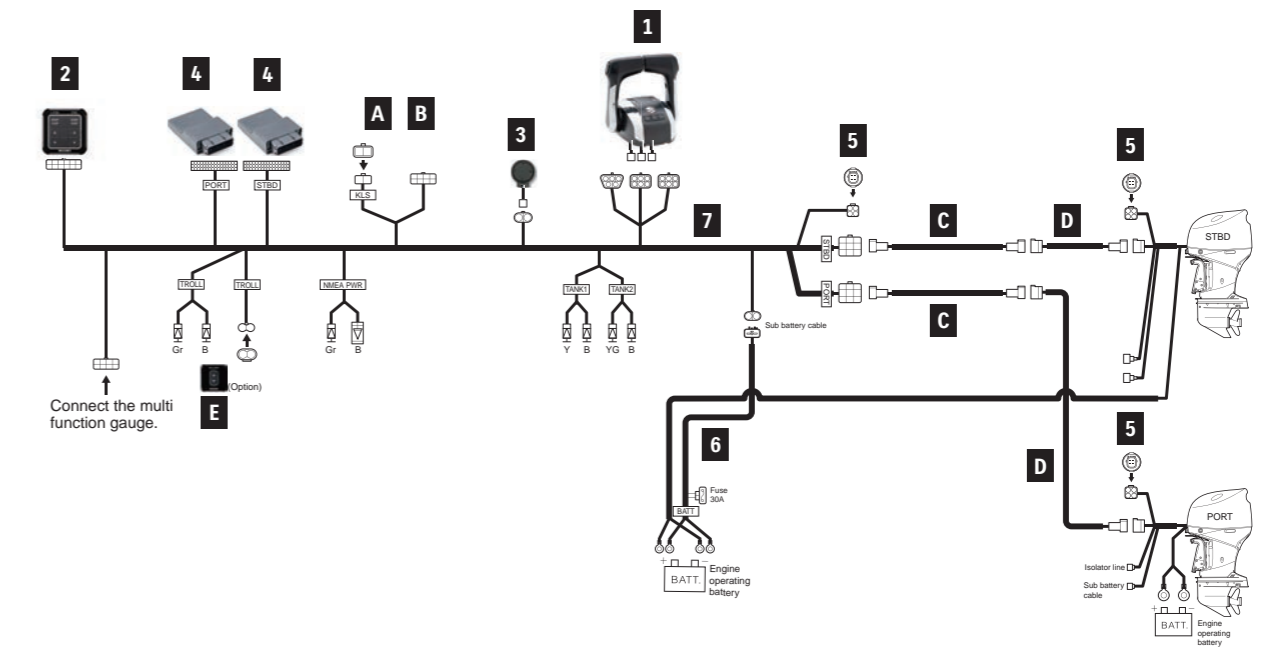


Items A ~ G are not included in the Kits. Please purchase them separately.

ITEM	For SINGLE ENGINE		LENGTH	KIT			
	PART NUMBER	PART NAME		BINNACLE-MOUNT		FLUSH-MOUNT	
				1st STATION KIT 67000-98L01-000	2nd STATION KIT 67000-98LA1-000	1st STATION KIT 67000-98L11-000	2nd STATION KIT 67000-98LB1-000
1	67200-98L00-000 67200-98L20-000	BINNACLE MOUNT R/C BOX FLUSH MOUNT R/C BOX		1 -	1 -	- 1	- 1
3	38500-93J90-000 09407-08401-000	WARNING BUZZER WARNING BUZZER CLAMP		- -	1 1	- -	1 1
4	36770-98L01-000 36775-98L00-000 36776-98L00-000 33925-98L00-000	BOAT CONTROL MODULE BCM HOLDER (F) BCM HOLDER (R) BCM CUSHION		1 1 1 1	1 1 1 1	1 1 1 1	1 1 1 1
5	33926-98L00-000	TERMINAL RESISTOR		2	-	2	-
6	36625-98J10-000	BATTERY-LEAD		1	-	1	-
7	36623-98L00-000	BCM #1 WIRING HARNESS		1	-	1	-
8	36627-98L10-000	HARNESS ASSY,EM SWITCH EXT		-	-	1	1
9	37140-98L00-000	UNIT COMP,SIGNAL CONVERTER		-	-	1	1
10	36622-98L00-000	DUAL-STATION WIRING HARNESS		-	1	-	1
11	36624-98L00-000	BCM #2 WIRING HARNESS		-	1	-	1
-	09403-13402-000	HARNESS CLAMP		10	10	10	10
A	37100-98L00-000 37100-98L10-000 37100-98L20-000 37290-98L00-000 37290-98L10-000 37290-98L20-000	MAIN SWITCH PANEL MAIN SWITCH PANEL VERTICAL MAIN SWITCH PANEL HORIZONTAL MAIN SWITCH PANEL (Keyless) MAIN SWITCH PANEL VERTICAL (Keyless) MAIN SWITCH PANEL HORIZONTAL (Keyless)		Select type		37100-98L00 or 37290-98L00	37290-98L00
B	37803-98L00-000	EMERGENCY SWITCH PANEL		*1	*1		
C	36620-98L00-000 36620-98L10-000	MAIN WIRING HARNESS	6.5m/21.3ft 9.5m/31.1ft	1 per station			
D	36620-98L20-000	MAIN WIRING HARNESS EXTENSION	2.0m/6.5ft	Select if necessary			
E	37860-98L00-000	TROLL MODE SWITCH PANEL (optional)		Optional			
F	36627-98L00-000	HARNESS COMP,R/CON EXT	1.0m/3.2ft			1	1

\*Required when using 37100-98L00 or 37290-98L00 with BINNACLE MOUNT.

## DUAL ENGINE



Items A ~ G are not included in the Kits. Please purchase them separately.

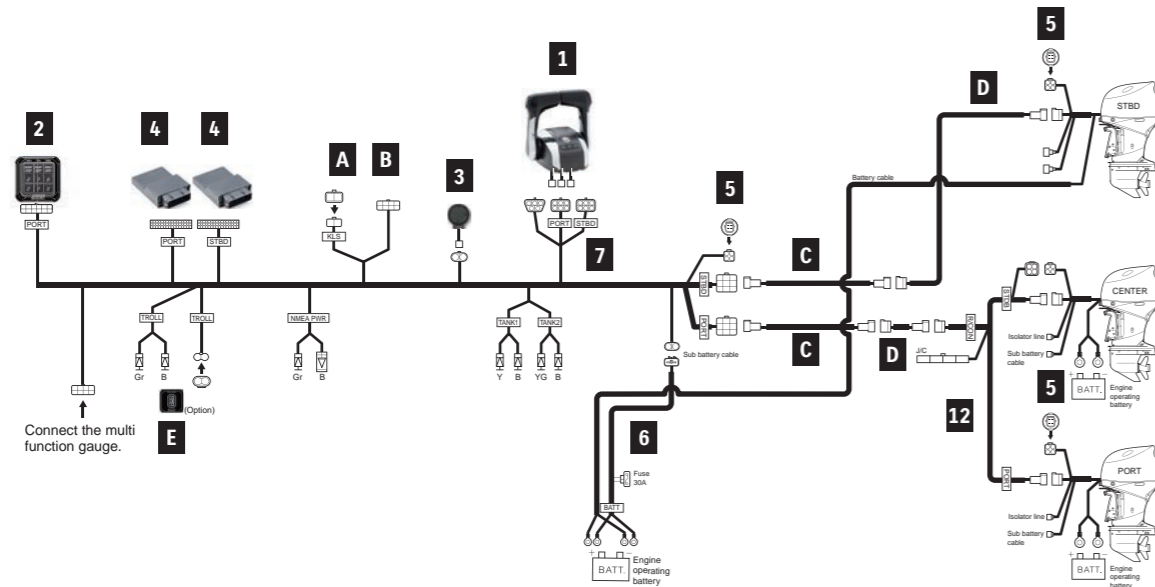
ITEM	For DUAL ENGINE		LENGTH	KIT	
	PART NUMBER	PART NAME		1st STATION KIT	2nd STATION KIT
				67000-98L21-000	67000-98LC1-000
1	67200-98L10-000	BINNACLE MOUNT R/C BOX	1	1	
2	37120-98L00-000	CONTROL PANEL	1	1	
3	38500-93J90-000 09407-08401-000	WARNING BUZZER WARNING BUZZER CLAMP	1 1	2 2	
4	36770-98L01-000 36775-98L00-000 36776-98L00-000 33925-98L00-000	BOAT CONTROL MODULE BCM HOLDER (F) BCM HOLDER (R) BCM CUSHION	2 2 2 2	2 2 2 2	
5	33926-98L00-000	TERMINAL RESISTOR	3	-	
6	36625-98J10-000	BATTERY-LEAD	1	-	
7	36623-98L30-000	BCM #1 WIRING HARNESS	1	-	
10	36622-98L00-000	DUAL-STATION WIRING HARNESS	-	1	
11	36624-98L10-000	BCM #2 WIRING HARNESS	-	1	
-	09403-13402-000	HARNESS CLAMP	15	10	
-	36612-98J20-000	CONNECTOR, COUNTER SELECT	1	-	
A	37100-98L00-000 37100-98L10-000 37100-98L20-000 37290-98L00-000 37290-98L10-000 37290-98L20-000	MAIN SWITCH PANEL MAIN SWITCH PANEL VERTICAL MAIN SWITCH PANEL HORIZONTAL MAIN SWITCH PANEL (Keyless) MAIN SWITCH PANEL VERTICAL (Keyless) MAIN SWITCH PANEL HORIZONTAL (Keyless)	Select type	Select type	
B	37803-98L00-000	EMERGENCY SWITCH PANEL	*1	*1	
C	36620-98L00-000 36620-98L10-000	MAIN WIRING HARNESS	6.5m/21.3ft 9.5m/31.1ft	2 per station	
D	36620-98L20-000	MAIN WIRING HARNESS EXTENSION	2.0m/6.5ft	Select if necessary	
E	37860-98L00-000	TROLL MODE SWITCH PANEL (optional)		Optional	
F	36627-98L00-000	HARNESS COMP,R/CON EXT	1.0m/3.2ft	Select if necessary	

\*Required when using 37100-98L00 or 37290-98L00 with BINNACLE MOUNT.

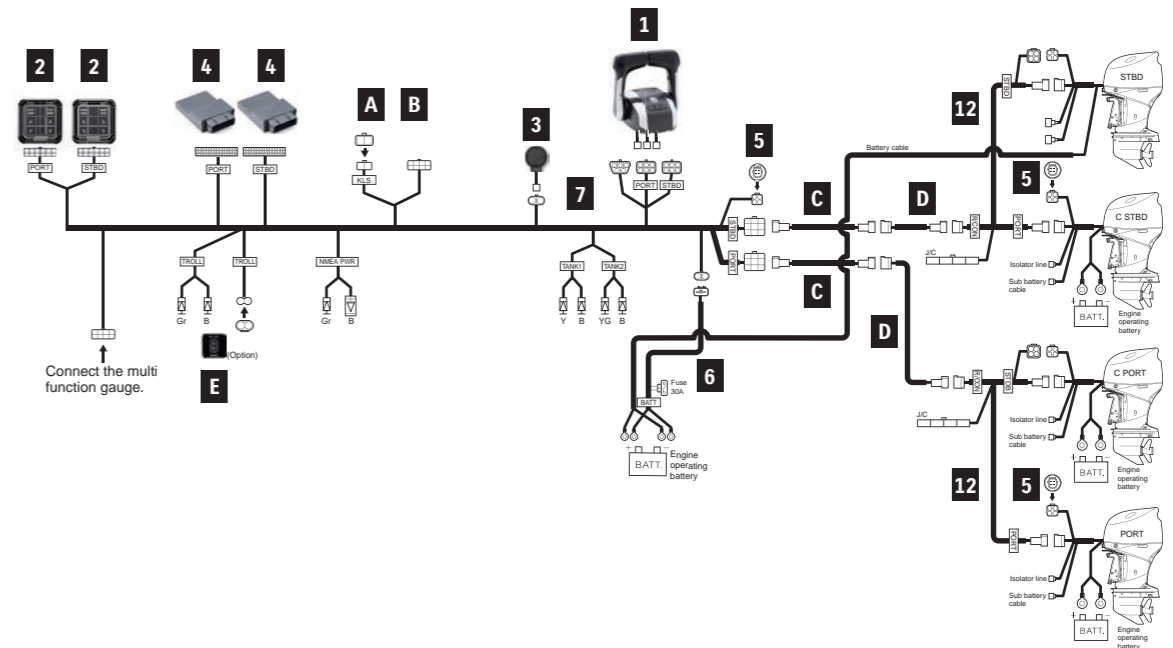


# REMOTE-CONTROL KIT

## TRIPLE ENGINE



## QUADRUPLE ENGINE



Items A ~ G are not included in the Kits. Please purchase them separately.

For TRIPLE ENGINE				KIT	
PART NUMBER	PART NAME	LENGTH		1st STATION KIT 67000-98L31-000	2nd STATION KIT 67000-98LD1-000
1	67200-98L10-000	BINNACLE MOUNT R/C BOX		1	1
2	37120-98L10-000	CONTROL PANEL		1	1
3	38500-93J90-000	WARNING BUZZER		1	2
	09407-08401-000	WARNING BUZZER CLAMP		1	2
4	36770-98L01-000	BOAT CONTROL MODULE		2	2
	36775-98L00-000	BCM HOLDER (F)		2	2
	36776-98L00-000	BCM HOLDER (R)		2	2
	33925-98L00-000	BCM CUSHION		2	2
5	33926-98L00-000	TERMINAL RESISTOR		3	-
6	36625-98J10-000	BATTERY-LEAD		1	-
7	36623-98L30-000	BCM #1 WIRING HARNESS		1	-
10	36622-98L00-000	DUAL-STATION WIRING HARNESS		-	1
11	36624-98L10-000	BCM #2 WIRING HARNESS		-	1
12	36621-98L00-000	ENGINE WIRING HARNESS		1	-
-	09403-13402-000	HARNESS CLAMP		18	10
-	36612-98J20-000	CONNECTOR, COUNTER SELECT		1	-
A	37100-98L00-000	MAIN SWITCH PANEL		Select type	Select type
	37100-98L10-000	MAIN SWITCH PANEL VERTICAL			
	37100-98L20-000	MAIN SWITCH PANEL HORIZONTAL			
	37290-98L00-000	MAIN SWITCH PANEL (Keyless)			
	37290-98L10-000	MAIN SWITCH PANEL VERTICAL (Keyless)			
	37290-98L20-000	MAIN SWITCH PANEL HORIZONTAL (Keyless)			
B	37803-98L00-000	EMERGENCY SWITCH PANEL		*1	*1
C	36620-98L00-000	MAIN WIRING HARNESS	6.5m/21.3ft	2 per station	
	36620-98L10-000	MAIN WIRING HARNESS EXTENSION	9.5m/31.1ft	Select if necessary	
E	37860-98L00-000	TROLL MODE SWITCH PANEL	2.0m/6.5ft	Optional	
F	36627-98L00-000	HARNESS COMP, R/CON EXT	1.0m/3.2ft	Select if necessary	
G	36627-98L20-000	HARNESS COMP, CAN EXT	2.0m/6.5ft	Select if necessary	

\*Required when using 37100-98L00 or 37290-98L00 with BINNACLE MOUNT.

Items A ~ G are not included in the Kits. Please purchase them separately.

For QUADRUPLE ENGINE				KIT	
PART NUMBER	PART NAME	LENGTH		1st STATION KIT 67000-98L41-000	2nd STATION KIT 67000-98LE1-000
1	67200-98L10-000	BINNACLE MOUNT R/C BOX		1	1
2	37120-98L20-000	CONTROL PANEL PORT		1	1
	37120-98L30-000	CONTROL PANEL STBD		1	1
3	38500-93J90-000	WARNING BUZZER		1	2
	09407-08401-000	WARNING BUZZER CLAMP		1	2
4	36770-98L01-000	BOAT CONTROL MODULE		2	2
	36775-98L00-000	BCM HOLDER (F)		2	2
	36776-98L00-000	BCM HOLDER (R)		2	2
	33925-98L00-000	BCM CUSHION		2	2
5	33926-98L00-000	TERMINAL RESISTOR		3	-
6	36625-98J10-000	BATTERY-LEAD		1	-
7	36623-98L40-000	BCM #1 WIRING HARNESS		1	-
10	36622-98L00-000	DUAL-STATION WIRING HARNESS		-	1
11	36624-98L20-000	BCM #2 WIRING HARNESS		-	1
12	36621-98L00-000	ENGINE WIRING HARNESS		2	-
-	09403-13402-000	HARNESS CLAMP		20	15
-	36612-98J20-000	CONNECTOR, COUNTER SELECT		2	-
A	37100-98L00-000	MAIN SWITCH PANEL		Select type	Select type
	37100-98L10-000	MAIN SWITCH PANEL VERTICAL			
	37100-98L20-000	MAIN SWITCH PANEL HORIZONTAL			
	37290-98L00-000	MAIN SWITCH PANEL (Keyless)			
	37290-98L10-000	MAIN SWITCH PANEL VERTICAL (Keyless)			
	37290-98L20-000	MAIN SWITCH PANEL HORIZONTAL (Keyless)			
B	37803-98L00-000	EMERGENCY SWITCH PANEL		*1	*1
C	36620-98L00-000	MAIN WIRING HARNESS	6.5m/21.3ft	2 per station	
	36620-98L10-000	MAIN WIRING HARNESS EXTENSION	9.5m/31.1ft	Select if necessary	
D	36620-98L20-000	MAIN WIRING HARNESS EXTENSION	2.0m/6.5ft	Optional	
E	37860-98L00-000	TROLL MODE SWITCH PANEL	2.0m/6.5ft	Select if necessary	
F	36627-98L00-000	HARNESS COMP,R/CON EXT	1.0m/3.2ft	Select if necessary	
G	36627-98L20-000	HARNESS COMP,CAN EXT	2.0m/6.5ft	Select if necessary	

\*Required when using 37100-98L00 or 37290-98L00 with BINNACLE MOUNT.



# MECHANICAL REMOTE CONTROL



For mechanical control models from year 2023, we introduce a new Main Wiring Harness. This new harness will enable CAN connection, which allows mechanical models to use functions that were previously exclusive to SPC models.  
By using with the SMG4, it will also enable the Automatic trim and use of the new Keyless Start System\*.

## Functions available using the CAN Harness

	DF40A-60A	DF70A-100B	DF100C-140B	DF150A-200A	DF200-250
CAN Connection	✓	✓	✓	✓	X
Automatic Trim	X	X	✓	✓	X
New Keyless Start System	X	✓	✓	✓	X

\*If using the new Keyless Start System, please ensure to use the new switch panels.  
The Keyless Start System is only available in limited regions. If you are not sure about your market, please check with your country coordinator.

## REMOTE-CONTROL

	Reference			
MAIN WIRING HARNESS (CAN Connection)	36620-93JA0/B0/C0 			
REMOTE CONTROL BOX	67200-88L01	67200-88L11	67200-93J34	67200-93J70
MAIN SWITCH PANEL (Regular Key)	37100-98L** 			
MAIN SWITCH PANEL (Keyless)	37290-98L** 			
GAUGE	SMG4 (page 32) 		Analogue Gauge (page 46) 	



# COMPONENT OF MECHANICAL REMOTE CONTROL

## 1 R/C BOX BINNACLE MOUNT R/C BOX



**67200-88L01-000**  
for Single Engine  
Applicable Model DF8A-250

## BINNACLE MOUNT R/C BOX DUAL



**67200-88L11-000**  
for Dual Engine  
Applicable Model DF70A-250

## FLUSH MOUNT R/C BOX



**67200-93J34-000**  
for Single Engine  
Applicable Model DF8A-250

## SIDE MOUNT REMOTE CONTROL BOX



**67200-91J32-000**  
for Single Engine. Without IGN SW  
Applicable Model DF4A-6A

**67200-94J40-000**  
for Single Engine. With warning  
buzzer without PTT switch  
Applicable Model DF8A-30A

**67200-93J70-000**  
for Single Engine. With PTT switch  
Applicable Model DF9.9B-250

**67200-97E62-000**  
for Single Engine  
Applicable Model DT40W

**67200-96B3-000**  
for Single Engine  
Applicable Model DT25K/30

## 2 MAIN SWITCH PANEL (REGULAR KEY)



**37100-98L10-000**  
Vertical type With  
Emergency stop switch  
Applicable Model DF9.9B-250



**37100-98L20-000**  
Horizontal type With  
Emergency stop switch  
Applicable Model DF9.9B-250



**37100-98L30-000**  
Dual Ignition With  
Emergency stop switch  
Applicable Model DF9.9B-250



**37100-98L00-000**  
Ignition switch only  
Applicable Model DF9.9B-250

## 2 MAIN SWITCH PANEL (KEYLESS START SYSTEM with CAN Connection)



**37290-98L10-000**  
Vertical type with  
Emergency stop  
switch



**37290-98L20-000**  
Horizontal type with  
Emergency stop  
switch



**37290-98L00-000**  
Ignition switch only



**37803-98L00-000**

## 3 EMERGENCY SWITCH PANEL

## 4 MAIN WIRING HARNESS (CAN Connection)

NEW



**36620-93JA0-000**  
6.5m/21.3ft for Control system  
Applicable Model DF40A-200A

**36620-93JB0-000**  
5.0m/16.4ft for Control system  
Applicable Model DF40A-200A

**36620-93JC0-000**  
8.0m/26.2ft for Control system  
Applicable Model DF40A-200A

## MAIN WIRING HARNESS EXTENSION



**36620-93JD0-000**  
Extension, 2.0m/6.5ft  
Applicable Model DF40A-200A

**36620-93JE0-000**  
Extension, 3.0m/9.8ft  
Applicable Model DF40A-200A

## 4 MAIN WIRING HARNESS (Non-CAN Connection)



**36620-93J70-000**  
6.5m/21.3ft for Control system  
Applicable Model 40A-250

**36620-93J80-000**  
5.0m/16.4ft for Control system  
Applicable Model DF40A-250

**36620-93J90-000**  
8.0m/26.2ft for Control system  
Applicable Model DF40A-250

**36620-89L10-000**  
6.5m/21.3ft for Control system  
Applicable Model DF9.9B/15A/  
20A

**36620-94L20-000**  
6.5m/21.3ft for Control system  
Applicable Model DF25A/30A

## MAIN WIRING HARNESS EXTENSION

**36620-93J12-000**  
2.0m/6.5ft for Control system  
Applicable Model DF9.9B-250

**36620-93J42-000**  
3.0m/9.8ft for Control system  
Applicable Model DF9.9B-250



**5** REMOTE-CONTROL CABLE (ORT THROTTLE AND SHIFT CABLES)



**67320-93J00-000**  
2.44 m / 8.0 ft  
Applicable Model DF4A-250,  
DT30/40W

**67320-93J10-000**  
3.05 m / 10.0 ft  
Applicable Model DF4A-250,  
DT30/40W

**67320-93J20-000**  
3.66 m / 12.0 ft  
Applicable Model DF4A-250,  
DT30/40W

**67320-93J30-000**  
4.27 m / 14.0 ft  
Applicable Model DF4A-250,  
DT30/40W

**67320-93J40-000**  
4.88 m / 16.0 ft  
Applicable Model DF4A-250,  
DT30/40W

**67320-93J50-000**  
5.49 m / 18.0 ft  
Applicable Model DF4A-250,  
DT30/40W

**67320-93J60-000**  
6.10 m / 20.0 ft  
Applicable Model DF4A-250,  
DT30/40W

**67320-93J70-000**  
6.71 m / 22.0 ft  
Applicable Model DF4A-250,  
DT30/40W

**67320-93J80-000**  
7.32 m / 24.0 ft  
Applicable Model DF4A-250,  
DT30/40W

**6** PTT SWITCH PANEL



**37805-88L00-000**  
Applicable Model DF40A-250

**7** KEYLESS CONTROL UNIT



**37171-98L01-000**  
443MHz for CAN connection

**37171-98L10-000**  
315MHz for CAN connection

**8** HARNESS ASSY, KEYLESS CONTROL



**36623-98LA0-000**  
for CAN connection

**9** BUZZER ASSY



**38500-93J90-000**

**10** RELAY ASSY, KLS



**38860-96L01-000**

**11** KEY FOB



**37172-96L03-000**  
433MHz

**37172-96L11-000**  
315MHz

**12** HARNESS ASSY, KLS DUAL ENGINE

No photo available

**36621-98L30-000**

**13** WIRE COMP, CAN

No photo available

**36661-96L40-000**

SPACER KIT

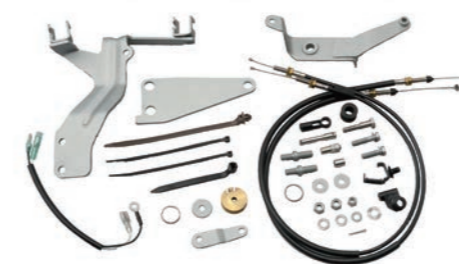


**67500-88L00-000**  
for Single Binnacle-mount type  
Applicable Model DF8A-250

**67500-88L10-000**  
for Dual Binnacle-mount type  
Applicable Model DF70A-250

REMOTE CONTROL ATTACHMENT KIT

Converts ME model to REMOTE-CONTROL model.



**67101-97L00-000**  
Applicable Model DF4A-6A

**67130-89L22-000**  
Applicable Model DF9.9B/15A/20A

CLAMP BRACKET SET

No photo available

**67130-94L30-000**  
Applicable Model DF25A/30A  
(Year 2023~)

**67130-94L20-000**  
Applicable Model DF25ATH/30ATH  
(Year 2023~)

**67130-99J02-000**  
Requires CLAMP BRACKET SET  
(41100-99J0-YAY)  
Applicable Model DF8A/9.9A

**67130-91L01-YAY**  
Applicable Model DT25K/30

**67130-94812-000**  
Applicable Model DT40W

**41100-99J0-YAY**  
Required to install  
67130-99J02  
Applicable Model DF8A/9.9A



TWIN REMOTE-CONTROL  
ATTACHMENT KIT



**67140-95601-000**

Applicable Model DF9.9B-30A/  
100C-250  
DT40W

BATTERY LEAD



**36625-93J10-000**

6.7 m / 21.9ft  
Applicable Model DF100C-200A/  
200-250

**36625-93J01-000**

3.9 m / 12.7ft  
Applicable Model DF100C-200A/  
200-250

KEYLESS PARTS HOLDER



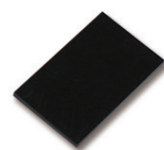
**37173-96L10-000**

HOLDER



**32980-38F00-000**

CUSHION



**32851-93J00-000**



## EXTRA OPTIONS

### RIGGING TUBE



**990C0-20010-000**

Applicable Model DF70A-350A  
\*Connect to the hose adapter  
equipped on the engine

### TROLL MODE SWITCH PANEL



**37860-98L00-000**

Applicable Model DF40A-200A/  
150AP-300AP/  
300B/325A/350A

Activates SUZUKI Troll Mode  
System and controls RPM  
from idling engine speed up to  
1200rpm at every 50rpm.

## SUZUKI TROLL MODE SYSTEM

### Troll Mode Switch:

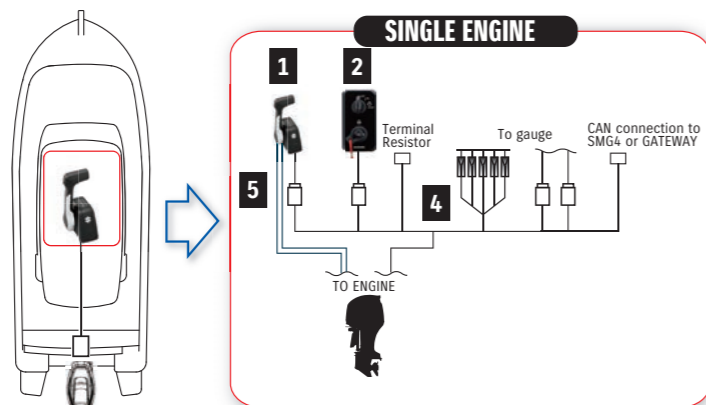
An option for Remote Control models from DF40A and over, this system allows the user to adjust engine speed in 50rpm increments, giving highly precise control at low revs. With its own tachometer and control switch, it works alongside our multi-function gauges and analogue gauges.

(Tiller Handle Models from DF40A and over have Suzuki Troll Mode System as standard equipment)

\*Not Applicable for DF250/225/200, DF250W, DF150W, DF90AWQH



## SINGLE ENGINE with CAN Connection



For SINGLE ENGINE (SINGLE STATION, REGULAR KEY)				Required Quantity		
	PART NUMBER	PART NAME	LENGTH	TOP-MOUNT	FLUSH-MOUNT	SIDE-MOUNT
1	67200-88L01-000	BINNACLE MOUNT R/C BOX		1	-	-
	67200-93J34-000	FLUSH MOUNT R/C BOX		-	1	-
	67200-93J70-000	SIDE MOUNT R/C BOX		-	-	1
2	37100-98L10-000	PANEL ASSY, MAIN SWITCH VERTICAL		1	1	-
	37100-98L20-000	PANEL ASSY, MAIN SWITCH HORIZONTAL				
	37100-98L00-000	MAIN SWITCH PANEL				
3	37803-98L00-000	EMERGENCY SWITCH PANEL		*1	*1	-
4	36620-93JA0-000	MAIN WIRING HARNESS	6.5m / 21.3ft	1	1	1
	36620-93JB0-000	MAIN WIRING HARNESS	5.0m / 16.4ft			
	36620-93JC0-000	MAIN WIRING HARNESS	8.0m / 26.2ft			
	36620-93JD0-000	WIRE ASSY, REMOTE CONTROL EXT	2.0m / 6.5ft			
	36620-93JE0-000	WIRE ASSY, REMOTE CONTROL EXT	3.0m / 9.8ft			
5	67320-93J00-000	R/C CABLE	2.4m / 8.0ft	Optional	Optional	Optional
	67320-93J10-000		3.0m / 9.8ft			
	67320-93J20-000		3.6m / 12.0ft			
	67320-93J30-000		4.2m / 14.0ft			
	67320-93J40-000		4.8m / 16.0ft			
	67320-93J50-000		5.4m / 18.0ft			
	67320-93J60-000		6.1m / 20.0ft			
	67320-93J70-000		6.7m / 22.0ft			
67320-93J80-000	7.3m / 24.0ft					
				Select two		

\*Only if using 37100-98L00-000

## For KEYLESS START SYSTEM

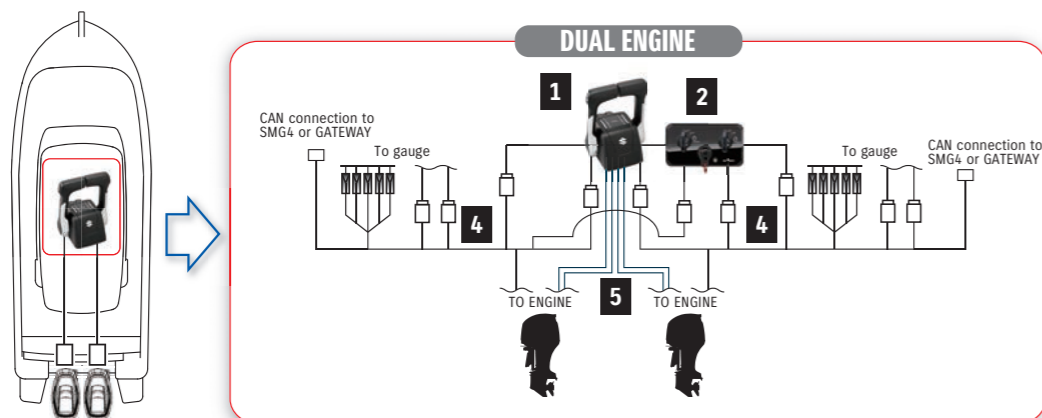
For SINGLE ENGINE (SINGLE STATION with KEYLESS SYSTEM)				Required Quantity	
	PART NUMBER	PART NAME	LENGTH	TOP-MOUNT	FLUSH-MOUNT
1	67200-88L01-000	BINNACLE MOUNT R/C BOX		1	-
	67200-93J34-000	FLUSH MOUNT R/C BOX		-	1
2	37290-98L10-000	PANEL ASSY, MAIN SWITCH VERTICAL		1	
	37290-98L20-000	PANEL ASSY, MAIN SWITCH HORIZONTAL			
	37290-98L00-000	MAIN SWITCH PANEL			
3	37803-98L00-000	EMERGENCY SWITCH PANEL		*1	
4	36620-93JA0-000	MAIN WIRING HARNESS	6.5m / 21.3ft	1	
	36620-93JB0-000	MAIN WIRING HARNESS	5.0m / 16.4ft		
	36620-93JC0-000	MAIN WIRING HARNESS	8.0m / 26.2ft		
	36620-93JD0-000	WIRE ASSY, REMOTE CONTROL EXT	2.0m / 6.5ft		
	36620-93JE0-000	WIRE ASSY, REMOTE CONTROL EXT	3.0m / 9.8ft		
5	67320-93J00-000	R/C CABLE	2.4m / 8.0ft	Optional	Optional
	67320-93J10-000		3.0m / 9.8ft		
	67320-93J20-000		3.6m / 12.0ft		
	67320-93J30-000		4.2m / 14.0ft		
	67320-93J40-000		4.8m / 16.0ft		
	67320-93J50-000		5.4m / 18.0ft		
	67320-93J60-000		6.1m / 20.0ft		
	67320-93J70-000		6.7m / 22.0ft		
67320-93J80-000	7.3m / 24.0ft				
				Select two	
7	37171-98L01-000	CONTROLLER ASSY, KLS 433		1	
	37171-98L10-000	CONTROLLER ASSY, KLS 315			
8	36623-98LA0-000	HARNESS ASSY, KLS CONT		1	
9	38500-93J90-000	BUZZER ASSY		1	
10	38860-96L01-000	RELAY ASSY, KLS		1	
11	37172-96L03-000	KEY FOB 433 MHz		2	
	37172-96L11-000	KEY FOB 315 MHz			

\*Only if using 37100-98L00-000





## DUAL ENGINE with CAN Connection



For DUAL ENGINE (SINGLE STATION, REGULAR KEY)		Required Quantity		
PART NUMBER	PART NAME	LENGTH	TOP MOUNT	SIDE MOUNT
1	67200-88L11-000 67200-93J70-000	BINNACLE MOUNT R/C BOX DUAL REMOTE CONTROL ASSY	1 -	- 2
2	37100-98L30-000	PANEL ASSY, MAIN SWITCH MULTI	1	-
4	36620-93JA0-000	MAIN WIRING HARNESS	6.5m / 21.3ft	2
	36620-93JB0-000	MAIN WIRING HARNESS	5.0m / 16.4ft	
	36620-93JC0-000	MAIN WIRING HARNESS	8.0m / 26.2ft	
	36620-93JD0-000	WIRE ASSY, REMOTE CONTROL EXT	2.0m / 6.5ft	
5	36620-93JE0-000	WIRE ASSY, REMOTE CONTROL EXT	3.0m / 9.8ft	Optional
	67320-93J00-000	R/C CABLE	2.4m / 8.0ft	Select four
	67320-93J10-000		3.0m / 9.8ft	
	67320-93J20-000		3.6m / 12.0ft	
67320-93J30-000	4.2m / 14.0ft			
5	67320-93J40-000	4.8m / 16.0ft	6.1m / 20.0ft	6.7m / 22.0ft
	67320-93J50-000	5.4m / 18.0ft		
	67320-93J60-000	6.1m / 20.0ft		
	67320-93J70-000	6.7m / 22.0ft		
67320-93J80-000	7.3m / 24.0ft			
13	36661-96L40-000	WIRE COMP, CAN		1

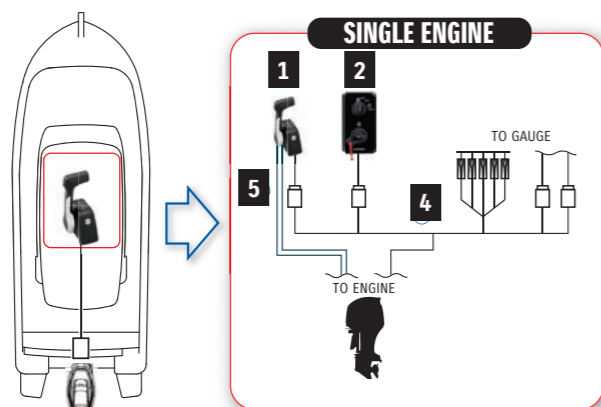
## For KEYLESS START SYSTEM

For DUAL ENGINE (SINGLE STATION with KEYLESS SYSTEM)				Required Quantity
PART NUMBER	PART NAME	LENGTH		
1	67200-88L11-000	BINNACLE MOUNT R/C BOX DUAL		1
2	37290-98L00-000	PANEL ASSY, ENG START SW		2
	37803-98L00-000	PANEL ASSY, EMERGENCY SW		1
4	36620-93JA0-000	MAIN WIRING HARNESS	6.5m / 21.3ft	Optional
	36620-93JB0-000	MAIN WIRING HARNESS	5.0m / 16.4ft	
	36620-93JC0-000	MAIN WIRING HARNESS	8.0m / 26.2ft	
	36620-93JD0-000	WIRE ASSY, REMOTE CONTROL EXT	2.0m / 6.5ft	
5	36620-93JE0-000	WIRE ASSY, REMOTE CONTROL EXT	3.0m / 9.8ft	Select four
	67320-93J00-000	R/C CABLE	2.4m / 8.0ft	
	67320-93J10-000		3.0m / 9.8ft	
	67320-93J20-000		3.6m / 12.0ft	
	67320-93J30-000		4.2m / 14.0ft	
	67320-93J40-000		4.8m / 16.0ft	
	67320-93J50-000		5.4m / 18.0ft	
	67320-93J60-000		6.1m / 20.0ft	
67320-93J70-000	6.7m / 22.0ft			
67320-93J80-000	7.3m / 24.0ft			
7	37171-98L01-000	CONTROLLER ASSY, KLS 433		1
	37171-98L10-000	CONTROLLER ASSY, KLS 315		
8	36623-98LA0-000	HARNESS ASSY, KLS CONT		1
9	38500-93J90-000	BUZZER ASSY		2
10	38860-96L01-000	RELAY ASSY, KLS		1
11	37172-96L03-000	KEY FOB 433 MHz		2
	37172-96L11-000	KEY FOB 315 MHz		
12	36621-98L30-000	HARNESS ASSY, KLS DUAL ENG		1

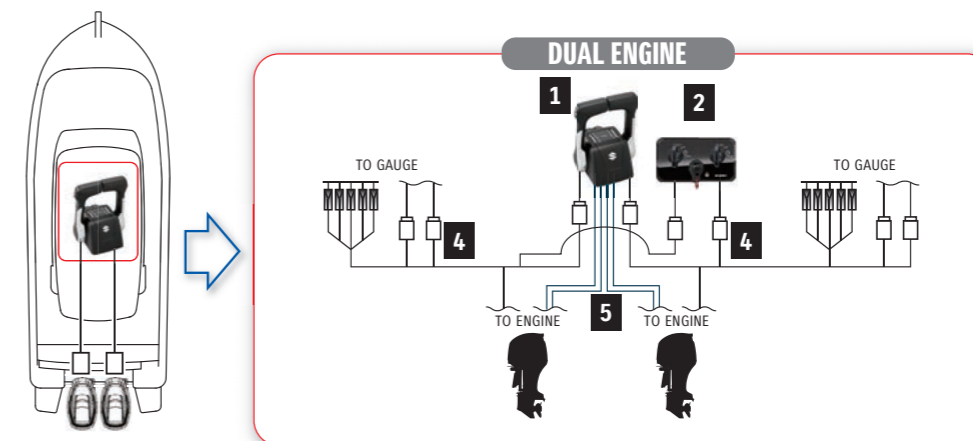




## SINGLE ENGINE with Non-CAN Connection



## DUAL ENGINE with NON-CAN Connection



For SINGLE ENGINE (Single Station)				Required Quantity		
PART NUMBER	PART NAME	LENGTH		BINNACLE-MOUNT	FLUSH-MOUNT	SIDE-MOUNT
1	67200-88L01-000 BINNACLE MOUNT R/C BOX			1	-	-
	67200-93J34-000 FLUSH MOUNT R/C BOX			-	1	-
	67200-93J70-000 SIDE MOUNT R/C BOX			-	-	1
2	37100-98L00-000 MAIN SWITCH PANEL IG SWITCH ONLY			1 (Select type)		
	37100-98L10-000 MAIN SWITCH PANEL VERTICAL					
	37100-98L20-000 MAIN SWITCH PANEL HORIZONTAL					
3	37803-98L00-000 PANEL ASSY, EMERGENCY SWITCH			*1		
4	36620-93J70-000 MAIN WIRING HARNESS	6.5m / 21.3ft		Select one		
	36620-93J80-000 MAIN WIRING HARNESS	5.0m / 16.4ft				
	36620-93J90-000 MAIN WIRING HARNESS	8.0m / 26.2ft				
	36620-93J12-000 MAIN WIRING HARNESS EXTENSION	2.0m / 6.5ft				
	36620-93J41-000 MAIN WIRING HARNESS EXTENSION	3.0m / 9.8ft		Optional. Select if necessary.		
5	67320-93J00-000 R/C CABLE	2.4m / 8.0ft		Select two		
	67320-93J10-000 R/C CABLE	3.0m / 9.8ft				
	67320-93J20-000 R/C CABLE	3.6m / 12.0ft				
	67320-93J30-000 R/C CABLE	4.2m / 14.0ft				
	67320-93J40-000 R/C CABLE	4.8m / 16.0ft				
	67320-93J50-000 R/C CABLE	5.4m / 18.0ft				
	67320-93J60-000 R/C CABLE	6.1m / 20.0ft				
	67320-93J70-000 R/C CABLE	6.7m / 22.0ft				
	67320-93J80-000 R/C CABLE	7.3m / 24.0ft				

\*Only needed if using 37100-98L00

For DUAL ENGINE (Single station)					Required Qty	
PART NUMBER	PART NAME	LENGTH	Qty		Single Station	
1	67200-88L11-000 BINNACLE MOUNT R/C BOX		1		1	
2	37100-98L00-000 MAIN SWITCH PANEL IG SWITCH ONLY		2		Select -98L00 OR -98L30	
	37100-98L30-000 DUAL IGNITION WITH E/S SWITCH		1			
3	37803-98L00-000 PANEL ASSY, EMERGENCY SWITCH		*1		*1	
4	36620-93J70-000 MAIN WIRING HARNESS	6.5m / 21.3ft	Select two	Optional	2	
	36620-93J80-000 MAIN WIRING HARNESS	5.0m / 16.4ft				
	36620-93J90-000 MAIN WIRING HARNESS	8.0m / 26.2ft				
	36620-93J12-000 MAIN WIRING HARNESS EXTENSION	2.0m / 6.5ft				
	36620-93J42-000 MAIN WIRING HARNESS EXTENSION	3.0m / 9.8ft			-	
5	67320-93J00-000 R/C CABLE	2.4m / 8.0ft	Select four	4		
	67320-93J10-000 R/C CABLE	3.0m / 9.8ft				
	67320-93J20-000 R/C CABLE	3.6m / 12.0ft				
	67320-93J30-000 R/C CABLE	4.2m / 14.0ft				
	67320-93J40-000 R/C CABLE	4.8m / 16.0ft				
	67320-93J50-000 R/C CABLE	5.4m / 18.0ft				
	67320-93J60-000 R/C CABLE	6.1m / 20.0ft				
	67320-93J70-000 R/C CABLE	6.7m / 22.0ft				
	67320-93J80-000 R/C CABLE	7.3m / 24.0ft				

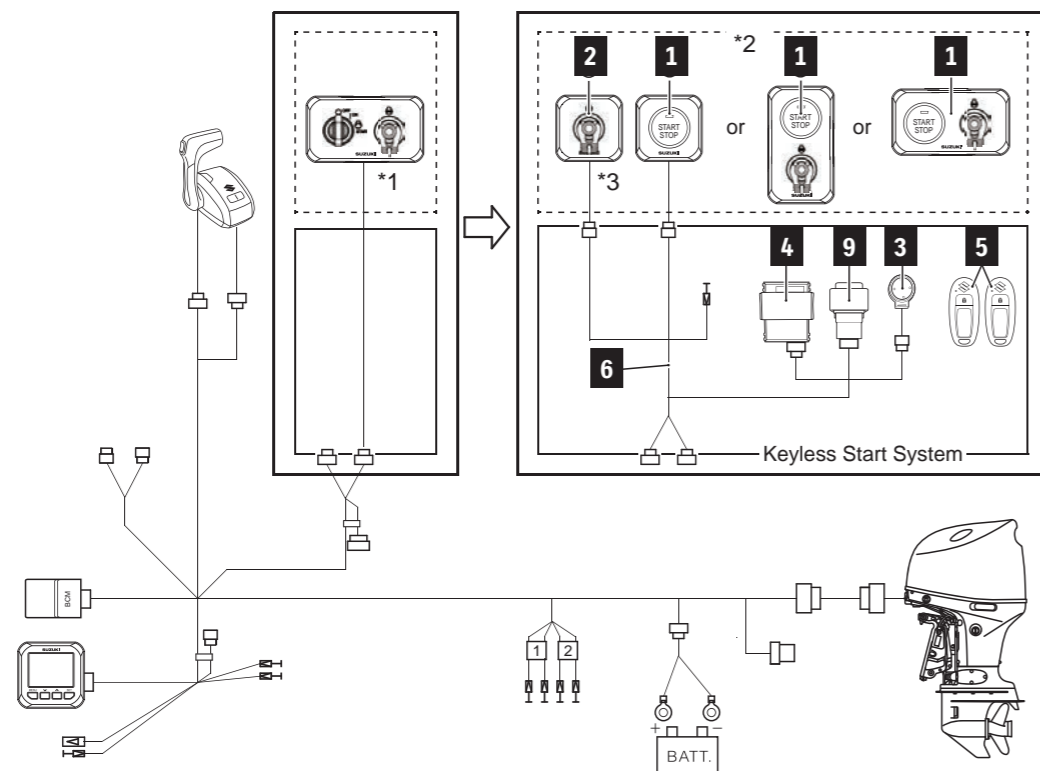
\*Only needed if using 37100-98L00



# INSTALLATION DIAGRAM

## KEYLESS START SYSTEM for Suzuki Precision Control or Mechanical Remote Control with CAN Connection

\*SMG4 or SMD is required to use



PART NUMBER	PART NAME	LENGTH	KIT		Total Required Quantity			
			37105-98L04 (433 MHz)	37105-98L14 (315 MHz)	SINGLE	DUAL	TRIPLE	QUAD
1	37290-98L00-000 37290-98L10-000 37290-98L20-000	-	-	-	1	1	1	1
2	37803-98L00-000	-	-	-	*1	*1	*1	*1
3	38500-93J90-000	-	1	1	1	1	1	
4	37171-98L01-000 37171-98L10-000	-	1	1	1	1	1	
5	37172-96L03-000 37172-96L11-000	-	2	2	2	2	2	
6	36623-98LA0-000	-	1	1	1	1	1	
9	38860-96L01-000	-	1	1	1	1	1	
10	37173-96L10-000	-	1	1	1	1	1	
11	32980-38F00-000	-	1	1	1	1	1	
12	32851-93J00-000	-	1	1	1	1	1	
-	09407-14407-000	-	1	1	1	1	1	
-	37117-96L00-000	-	2	2	-	-	-	

■ \*Used when using 37290-98L00-000.

# COMPONENT PARTS



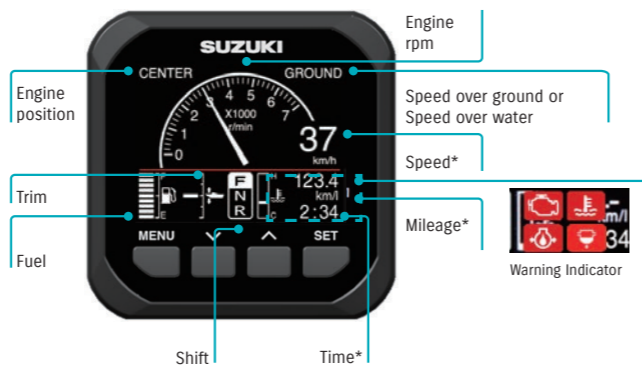
PART NUMBER	PART NAME	NOTE
1	37290-98L00-000 37290-98L10-000 37290-98L20-000	
2	37803-98L00-000	Used when using 37290-98L00-000
3	38500-93J90-000	
4	37171-98L01-000 37171-98L10-000	433MHz 315MHz
5	37172-96L03-000 37172-96L11-000	433MHz 315MHz
6	36623-98LA0-000	
9	38860-96L01-000	
10	37173-96L10-000	
11	32980-38F00-000	
12	32851-93J00-000	



# SUZUKI MULTI-FUNCTION GAUGE

The Suzuki Multi-function Gauge (SMG4) shows all the necessary information on one, user-friendly screen. Users can view a wide range of important information, including engine rpm, speed and trim angle, engine temp and fuel economy in and total fuel flow for multiple engine installations. The SMG4 also shows alerts from the engine's sensors and warning systems.

## ANALOGUE TACHO & SPEED MODE



\* Speed sensor or GPS module required.

## TACHO MODE



- Fuel flow (instantaneous)
- Mileage\* (instantaneous and average)
- Trip time, Trip distance\*
- Engine hour, Voltage, Water temp and more...

	GPS Module	Speed sensor
Speed	✓	✓
Mileage	✓	✓
Trip distance	✓	✓
Time	✓	N/A

## TROLL MODE FUNCTION



- Allows you to control your troll mode from the Multi-Function Gauge

This function is available from year 2019 models. Can only be used by models which are adapted to troll mode.

## DISPLAY MODES

### DIGITAL TACHO & SPEED MODE



### ANALOGUE SPEED MODE



\*Night mode screen

### FUEL MODE



## FEATURES

### Multilingual menu

SMG4 is available in 13 languages: English, French, Italian, German, Spanish, Swedish, Norwegian, Finnish, Dutch, Portuguese, Danish, Russian, Japanese.



### Automatic Trim

Automatically adjusts trim angle with OBM RPM



### Demo mode

Shows preinstalled data to demonstrate function of selected screen. (Ideal for boat shows and exhibitions)





**1** GAUGE ASSY,  
MULTI



34011-96L42-000

**2** WIRE COMP,  
EXTENSION



**2-1** 36662-88L10-000  
0.6m / 1.9ft

**2-2** 36662-88L20-000  
1.8m / 5.9ft

**3** HARNESS ASSY,  
NETWORK POWER



36663-88L00-000

**4** CONNECTOR COMP,  
BRANCH



36664-88L00-000

**5** UNIT COMP,  
RESISTOR FEMALE



36665-88L00-000

**6** UNIT COMP,  
RESISTOR MALE



36665-88L10-000

**7** WIRE COMP,  
GAUGE ADAPTER



**7-1** 36667-96L40-000

**7-2** 36667-96L50-000  
for Tank 3-4

**7-3** 36667-96L11-000  
for Mechanical  
Control

**8** SENSOR ASSY,  
PADDLE WHEEL



34190-88L00-000

GPS RECEIVER  
MODULE



39950-88L02-000

**9** WIRE COMP, GAUGE EXT (0.6m)  
0.6 m / 1.9ft

36667-96L60-000  
0.6 m / 1.9ft

**10** ADAPTER COMP, GAUGE  
for Dual Engine

36661-96L30-000  
for Dual Engine

**11** ADAPTER,  
GAUGE FOR MULTI



36665-87L10-000  
In addition to component of  
[MECHANICAL SINGLE]

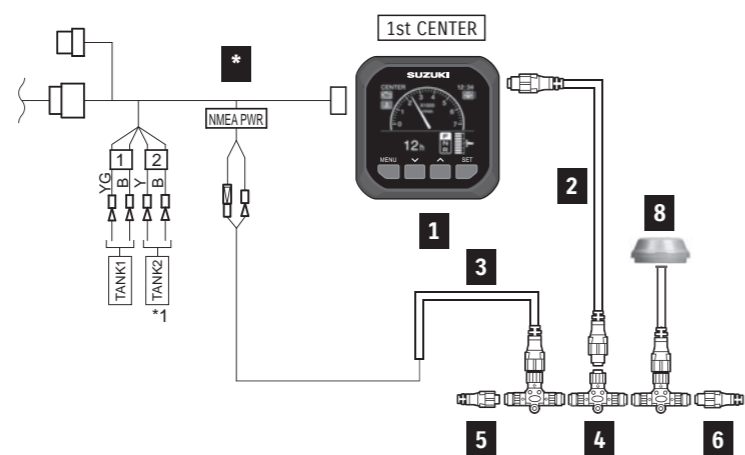




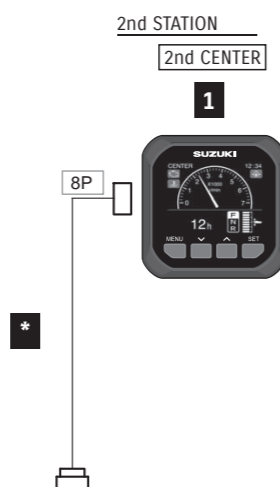
# INSTALLATION DIAGRAM

## SINGLE ENGINE with S.P.C or MECHANICAL CONTROL (CAN Connection)

### SINGLE STATION



### DUAL STATION (S.P.C only)



### TOTAL REQUIREMENT LIST

PART NUMBER	PART NAME	LENGTH	Total Required Quantity					
			SINGLE STATION	SINGLE STATION (Speed over water)	SINGLE STATION (Speed over ground)	DUAL STATION	DUAL STATION (Speed over water)	DUAL STATION (Speed over ground)
1	34011-96L42-000 GAUGE ASSY, MULTI	-	1	1	1	2	2	2
-	36001-88L00-000 CABLE KIT	-	-	1	1	-	1	1
8	34190-88L00-000 SENSOR ASSY, PADDLE WHEEL	-	-	1	-	-	1	-
-	39950-88L02-000 GPS RECEIVER MODULE	-	-	-	1	-	-	1
-	33926-98L00-000 TERMINAL RESISTOR	-	1	1	1	-	-	-
*S.P.C	36623-98L00-000 BCM HARNESS No.1	-	1	1	1	1	1	1
	36624-98L00-000 BCM HARNESS No.2	-	-	-	-	1	1	1
*Mechanical	36620-93JA0-000 MAIN WIRING HARNESS	6.5m/21.3ft	1	1	1	Dual station is not applicable for Mechanical Control.		
	36620-93JB0-000	5.0m/16.4ft						
	36620-93JC0-000	8.0m/26.2ft						

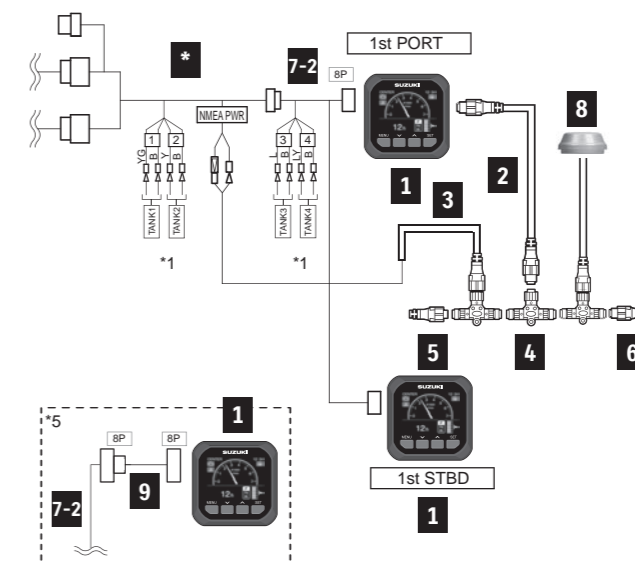
\* BCM Harness No.1 & 2 ⇒ S.P.C. See page 7.  
Main Wiring Harness ⇒ Mechanical Control (CAN Connection). See page 19.

### CABLE KIT COMPONENT

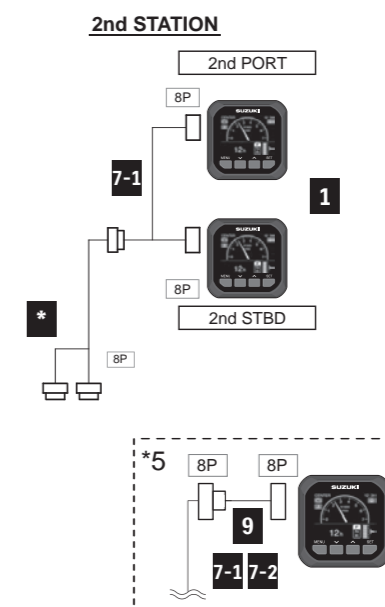
PART NUMBER	PART NAME	LENGTH	Quantity
36001-88L00-000	CABLE KIT	-	-
2 36662-88L10-000	WIRE COMP, EXTENSION	0.6m	1
3 36663-88L00-000	HARNESS ASSY, NETWORK POWER	-	1
4 36664-88L00-000	CONNECTOR COMP, BRANCH	-	1
5 36665-88L00-000	UNIT COMP, RESISTOR FEMALE	-	1
6 36665-88L10-000	UNIT COMP, RESISTOR MALE	-	1

## DUAL ENGINE with S.P.C or MECHANICAL CONTROL (CAN Connection)

### SINGLE STATION



### DUAL STATION (S.P.C only)



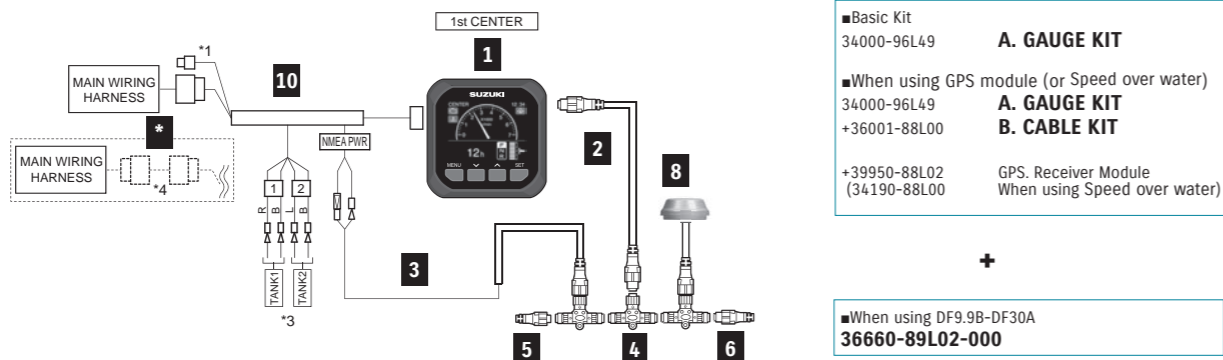
### TOTAL REQUIREMENT LIST

PART NUMBER	PART NAME	LENGTH	Total Required Quantity					
			SINGLE STATION	SINGLE STATION (Speed over water)	SINGLE STATION (Speed over ground)	DUAL STATION	DUAL STATION (Speed over water)	DUAL STATION (Speed over ground)
1	34011-96L42-000 GAUGE ASSY, MULTI	-	2	2	2	4	4	4
-	36001-88L00-000 CABLE KIT	-	-	1	1	-	1	1
7-1	36667-96L40-000 WIRE COMP, GAUGE ADAPTER	-	Select 1			2**		
7-2	36667-96L50-000 WIRE COMP, GAUGE ADAPTER (FOR TANK3-4)	-	Select 1			2**		
8	34190-88L00-000 SENSOR ASSY, PADDLE WHEEL	-	-	1	-	-	1	-
	39950-88L02-000 GPS RECEIVER MODULE	-	-	-	1	-	-	1
9	36667-96L60-000 WIRE COMP, GAUGE EXT	-	-	-	-	Optional		
-	33926-98L00-000 TERMINAL RESISTOR	-	1	1	1	-	-	-
*S.P.C	36623-98L30-000 BCM HARNESS No.1	-	1	1	1	1	1	1
	36624-98L10-000 BCM HARNESS No.2	-	-	-	-	1	1	1
*Mechanical	36620-93JA0-000 MAIN WIRING HARNESS	6.5m/21.3ft	2	2	2	Dual station is not applicable for Mechanical Control.		
	36620-93JB0-000	5.0m/16.4ft						
	36620-93JC0-000	8.0m/26.2ft						

\* BCM Harness No.1 & 2 ⇒ S.P.C. See page 7.  
Main Wiring Harness ⇒ Mechanical Control (CAN Connection). See page 19.  
\*\*36667-96L40 x 1 + 36667-96L50 x 1 or 36667-96L40 x 2



## SINGLE ENGINE with MECHANICAL CONTROL (Non-CAN Connection)

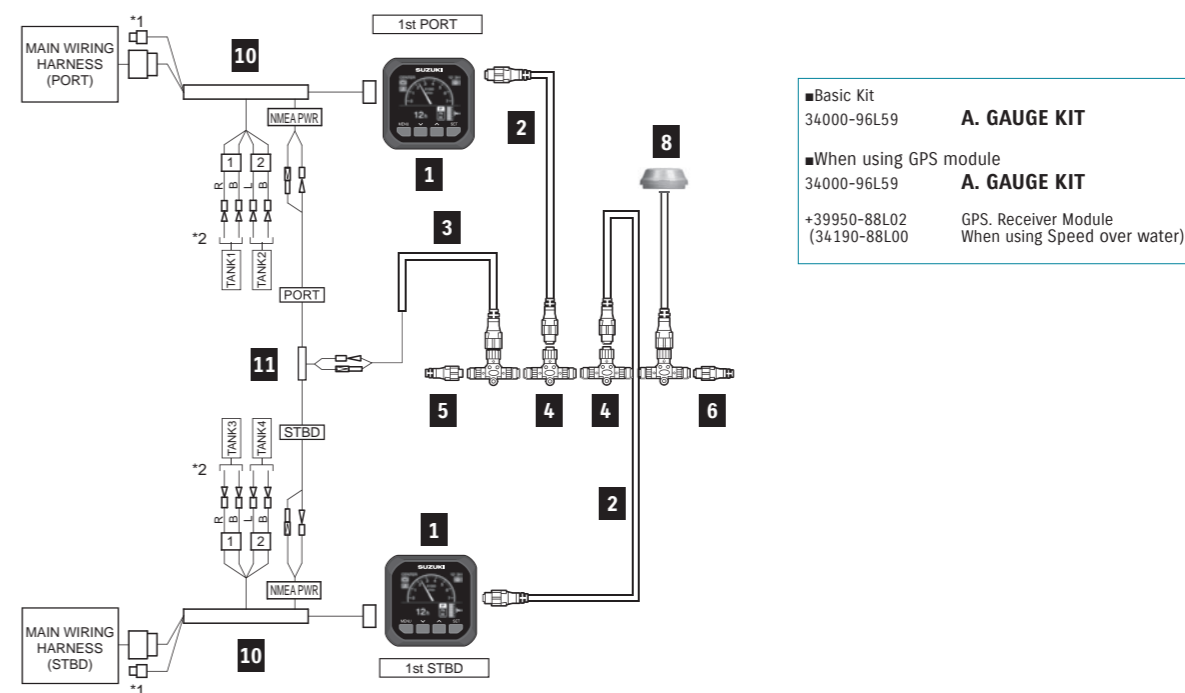


For MECHANICAL CONTROL & SINGLE ENGINE				KIT		Total Required Quantity A (+ B) << >>
PART NUMBER	PART NAME	LENGTH	A. GAUGE KIT 34000-96L49-000	B. CABLE KIT 36001-88L00-000		
1	34011-96L42-000	GAUGE ASSY, MULTI	1	-	1	
2-1	36662-88L10-000	WIRE COMP, EXTENSION	-	1	(1)	
2-2	36662-88L20-000	WIRE COMP, EXTENSION	-	-	-	
3	36663-88L00-000	HARNESS ASSY, NETWORK POWER	-	1	(1)	
4	36664-88L00-000	CONNECTOR COMP, BRANCH	-	1	(1)	
5	36665-88L00-000	UNIT COMP, RESISTOR FEMALE	-	1	(1)	
6	36665-88L10-000	UNIT COMP, RESISTOR MALE	-	1	(1)	
8	34190-88L00-000	SENSOR ASSY, PADDLE WHEEL	-	-	(1)	
	39950-88L02-000	GPS RECEIVER MODULE	-	-	(1)	
10	36661-96L30-000	ADAPTER COMP, GAUGE	1	-	1	
*	36660-89L02-000	SET, ENG TO INTERFACE WIRE	-	-	<1>	

■ \*( ) parts are required when using GPS module or Speed sensor.  
 ■ \* < > part are required when using with DF9.9B to 30A.



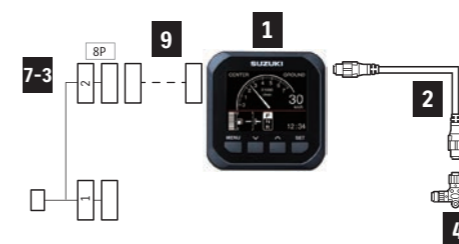
## DUAL ENGINE with MECHANICAL CONTROL (Non-CAN Connection)



For MECHANICAL CONTROL & DUAL ENGINE				KIT	Total Required Quantity A (+ B)
PART NUMBER	PART NAME	LENGTH	A. GAUGE KIT 34000-96L59-000		
1	34011-96L42-000	GAUGE ASSY, MULTI	2	2	
2-1	36662-88L10-000	WIRE COMP, EXTENSION	2	2	
2-2	36662-88L20-000	WIRE COMP, EXTENSION	-	-	
3	36663-88L00-000	HARNESS ASSY, NETWORK POWER	1	1	
4	36664-88L00-000	CONNECTOR COMP, BRANCH	2	2	
5	36665-88L00-000	UNIT COMP, RESISTOR FEMALE	1	1	
6	36665-88L10-000	UNIT COMP, RESISTOR MALE	1	1	
8	34190-88L00-000	SENSOR ASSY, PADDLE WHEEL	-	(1)	
	39950-88L02-000	GPS RECEIVER MODULE	-	(1)	
10	36661-96L30-000	ADAPTER COMP, GAUGE	2	2	
11	36665-87L10-000	ADAPTER, GAUGE FOR MULTI	1	1	

■ \*( ) parts are required when using GPS module or Speed sensor.

## ADDITIONAL GAUGE COMPONENTS (MECHANICAL)



ADDITIONAL GAUGE COMPONENTS (MECHANICAL)				Total Required Quantity
PART NUMBER	PART NAME	LENGTH		
1	34011-96L42-000	GAUGE ASSY, MULTI	1	
2-1	36662-88L10-000	WIRE COMP, EXTENSION	1	
2-2	36662-88L20-000	WIRE COMP, EXTENSION	1	
4	36664-88L00-000	CONNECTOR COMP, BRANCH	1	
7-3	36667-96L11-000	WIRE COMP, DUAL GAUGE ADAPTER	1	
9	36667-96L60-000	WIRE, GAUGE EXT	(1)	

Please use "36667-96L60-000 WIRE, GAUGE EXT" as an extension between "34011-96L42" and "36667-96L11"





# FishHunter™ Drive

## FishHunter™ Drive

The FishHunter™ Drive is a new feature for Furuno NAVpilot-300 Autopilot, developed exclusively for Suzuki Drive-By-Wire engines. With a simple software update, it offers enhanced autopilot and engine controls which anglers will find highly valuable while jigging or trolling. It is available for configurations of up to 4 engines.



The following items are required to use the FishHunter™ Drive:

Supplier	Product		Note
SUZUKI	Outboard Motor (DBW models from Year 2022)		
	Gateway	34923-96L12	
	Boat Control Module (BCM)	36770-98L01	Included in the DBW kits. See pages 08-15.
Furuno	NAVpilot-300		
	SATELLITE COMPASS™ / GPS + Heading Sensor		
	SMD* / Furuno multi function display		Display is required for Route Smoothing™. *SMD: See page 42.

## FEATURES



### Speed Control

The boat will maintain a preset speed by adjusting engine RPM.



### Route Smoothing™

Automatically controls the speed at waypoints for smooth turns while navigating a designated route. On approach to the final waypoint, the boat will slow down and activate Point Lock™ automatically to hold on the destination.



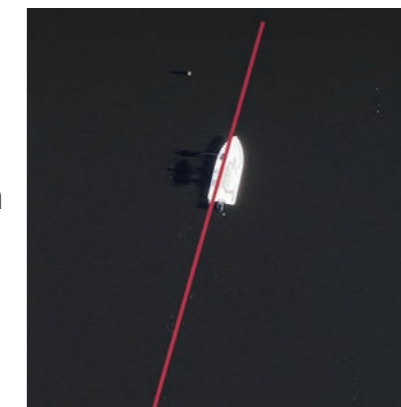
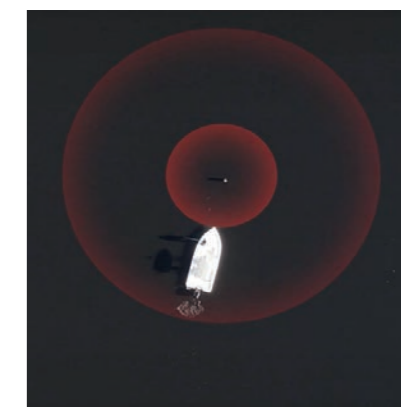
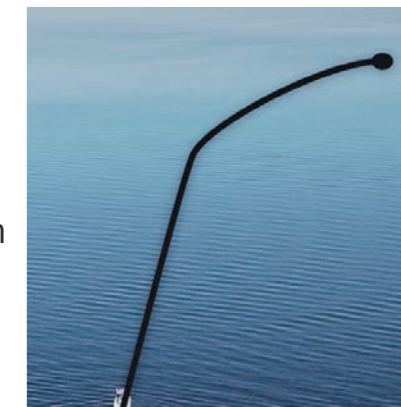
### Point Lock™

Allows the vessel to easily keep a fixed position by controlling the steering and shift, limiting the effects of wind and current.

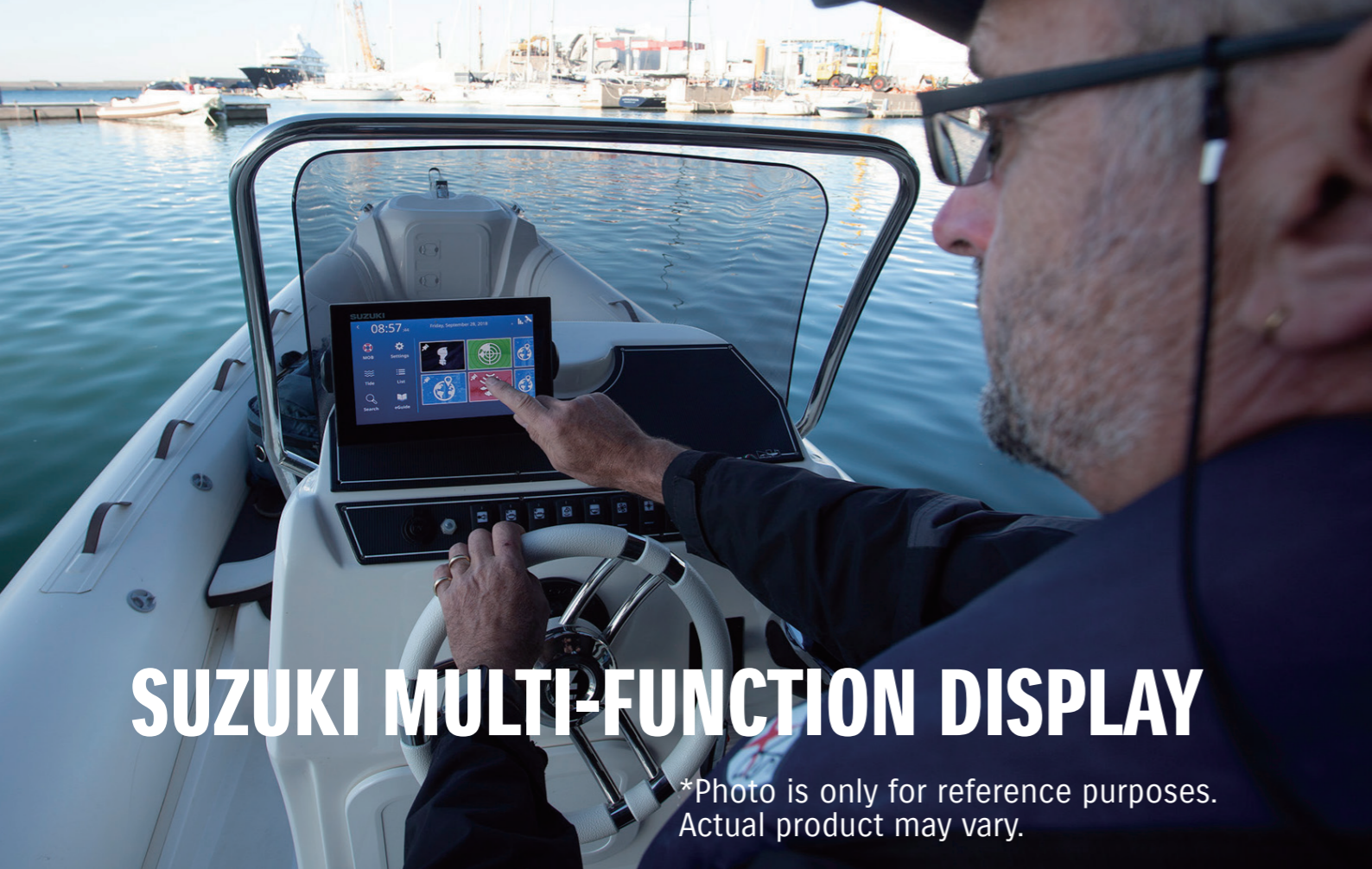


### SABIKI™ Lock

Expands upon the NAVpilot-300's SABIKI™ function by controlling both the steering and throttle to maintain stern direction, freeing the angler to focus on jigging and other vertical fishing.







# SUZUKI MULTI-FUNCTION DISPLAY

\*Photo is only for reference purposes. Actual product may vary.

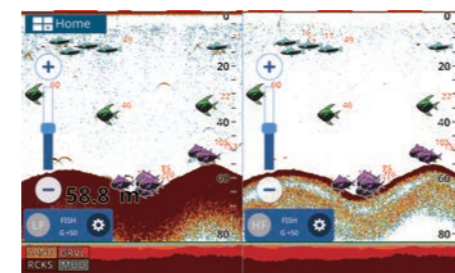
## Design Your Own Screen



## Suzuki Engine Interface



Detailed Chart With C-MAP 4D Compatibility



Advanced Reliable Fishing Partner-FISH FINDER\*

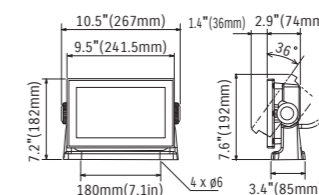
\* Requires FURUNO transducer to utilize this feature. Please contact to local FURUNO Dealers for more details.

## SMD9 SPECIFICATIONS

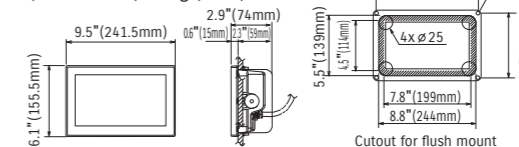
MULTI-FUNCTION DISPLAY		SMD9
<b>DISPLAY UNIT</b>		
Type	Color TFT Multi Touch LCD	
Screen Size	9" (228.6mm) Wide	
Screen Resolution	WVGA 800 x 480 pixels	
Screen Brightness	1000 cd/m <sup>2</sup> (typical)	
Language	English (US & UK), Russian, Bulgarian, French, Spanish, German, Italian, Portuguese, Danish, Swedish, Norwegian, Finnish, Greek, Japanese	
Display Modes	Chart Plotter, Fish Finder, Radar*, AIS**, Instruments* <sup>3</sup> (Nav Data, Engine, Wind, Fuel tank, Autopilot*, etc.), GPS status, Weather Forecast *1: Connection to the 1st Watch Wireless Radar DRS4W required *2: Connection to AIS sensor required *3: Connection to external sensors required *4: Connection to the FURUNO NAVPilot-300 required	
Memory Capacity	30,000 points for ship's track and waypoints, 1,000 planned routes (Max. 50 points per route), 5,000 quickpoints	
<b>GPS/WAAS</b>		
Receiver Type	GPS SBAS	72 channels 1 channel (C/A mode, WAAS)
Receiving Frequency	L1 (1575.42 MHz)	
Time to First FIX	100 s (cold start)	
Tracking Velocity	999 kn	
SBAS	WAAS, EGNOS, MSAS	
<b>ACCURACY</b>		
Internal Antenna	GPS WAAS MSAS	10 m Max 5 m Max 7.5 m Max
<b>CHART PLOTTER</b>		
Cartography	C-MAP 4D	
Alarms	Anchor, Depth, Arrival, Speed, Trip, Temperature, etc	
<b>RADAR</b>		
Display Modes	Head-up, North-up* *Heading input required.	
<b>FISH FINDER (Built-in)</b>		
Transmit Frequency	CW: 50/200 kHz, CHIRP: 40 to 225 kHz	
Transducer	300 W or 600 W or 1 kW* (Transducer dependent) *Matching Box MB-1100 required for some specific FURUNO transducers	
Modes	TrueEcho CHIRP™, RezBoost™, ACCU-FISH™, Bottom Discrimination**, Auto gain (Fishing/Cruising), Manual gain, A-Scope, Marker Zoom, Bottom Zoom, Bottom Lock* CHIRP dedicated transducer required. ** Dual frequency compatible transducer required.	
<b>INTERFACE</b>		
NMEA2000	1 Port	
Interface NMEA2000	Input	126992, 127245/250/251/258/489/493/497/505, 128259/267/275, 129025/026/029/038/039/040/041/285/538/540, 129793/794/798/808/809/810, 130306/310/311/312/313/314/316, 130577/830/831/832/880
	Output	126992, 127245/250/251/257/258/505, 128259/267/275, 129025/026/029/033/283/284/285, 130310/312/316/830/831/832
NMEA0183	1 Port	
Interface (NMEA0183)	Output	AAM, APB, BOD, BWR, DBT, DPT, GGA, GLL, GNS, GSA, GSV, GTD, HDG, HDT, MTW, MWV, RMA, RMB, RMC, RTE, THS, TLL, VHW, VTG, WPL, XTE, ZDA, PFEC (SDmrk/SDtbd/SDtfl/pidat)
SD Card Slot	2 Slots, up to 32 GB (SD, SDHC Supported)	
Wireless LAN	IEEE 802.11 b/g/n	
<b>ENVIRONMENT</b>		
Temperature (IEC60945)	-15°C to +55°C	
Waterproofing	IP56	
<b>POWER</b>		
	12-24 VDC	
	1.0-0.5 A	

Contact SMC for details

### SMD9 Display Unit (Bracket Mount) 3.3lb (1.5kg)



### (Flush Mount) 1.3kg (2.9lb)







# SUZUKI DIAGNOSTIC SYSTEM MOBILE PLUS

The Suzuki Diagnostic System Mobile Plus (SDSM+) is a new app that combines the existing functions of the former SDSM app with new, unique features to support our customer's marine life and experience. With a few screen taps and a simple QR code scan, this app guides customers from boat day planning, all the way to their next maintenance session. The SDSM+ is free of charge and available for anyone with a working smartphone.



## What can SDSM+ Do?

- Provide boating condition forecasts all in one screen.
  - Guide customer through pre-departure inspection.
  - Receive and display engine condition by scanning a QR code. The app also allows the customer to send this data to their dealer by e-mail.\*
- \*SMG4 (Page 32) or SMD (Page 42) is necessary for this feature.

Find out more at global website here! →

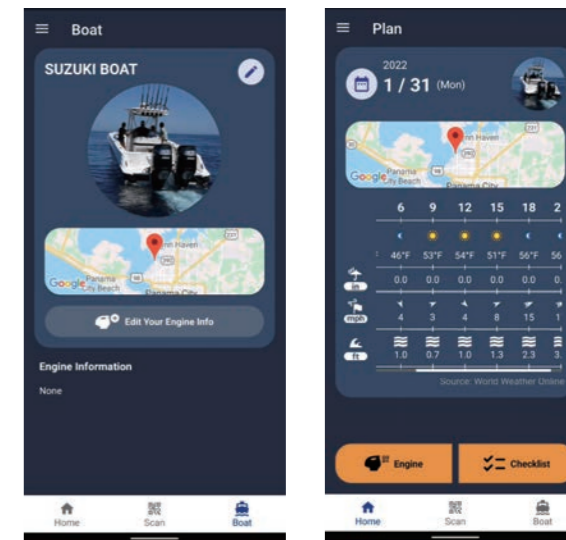
Or go to [https://www.globalsuzuki.com/marine/sdsm\\_plus/](https://www.globalsuzuki.com/marine/sdsm_plus/)



\*QR Code is a registered trademark of DENSO WAVE.

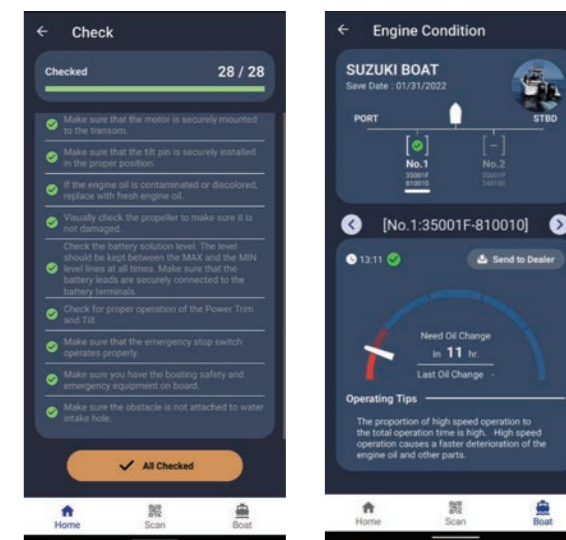
## Before the departure day

Customer will first register their boat and engine(s) information on to the app. Then, customer can select a boating date and destination to check the weather forecast.



## On the departure day

The app will show a pre-departure checklist to inspect the boat and engine(s). Customer can also scan the QR code on the SMG4 or SMD to check engine condition data. The app will also provide operating tips based on piloting tendencies.



## After the boating

Customer can scan the QR code again to check the latest engine condition. After checking, the customer can e-mail the data to an authorized Suzuki dealer. The dealer can use this data to prepare for the customer's next maintenance session.



The SDSM+ app is subject to updates and other changes. Images on this catalogue may differ from the actual screen.





# ANALOGUE INSTRUMENT

## SPEEDOMETER

\*Each speedometer includes vinyl tube, hard ware, and installation manual.



White



Black

(White)

(Black)

**34100-93J13-000** **34100-93J02-000**

Gauge Size 4" (101.6mm)  
Maximum Speed 130km/h, 80mph  
Bourdon-tube type speedometer with readings in km/h and mph.



White



Black

(White)

(Black)

**34100-93J33-000** **34100-93J22-000**

Gauge Size 4" (101.6mm)  
Maximum Speed 80km/h, 50mph  
Bourdon-tube type speedometer with readings in km/h and mph.



White



Black

(White)

(Black)

**34100-93J53-000** **34100-93J42-000**

Gauge Size 4" (101.6mm)  
Maximum Speed 80km/h, 40knots  
Bourdon-tube type speedometer with readings in km/h and knots.



**34100-93J62-000**

Gauge Size 4" (101.6mm)  
Background White  
Maximum Speed 120km/h, 65knots  
Bourdon-tube type speedometer with readings in km/h and knots.

## TACHOMETER



White



Black



White



Black



White



Black

**34200-93J14-000** (White)

**34200-93J02-000** (Black)

Gauge Size 4" (101.6mm)

Applicable Model DF25A-250

Caution system alert with a monitor lamp lighting on when an abnormal engine condition occurs. Refer to SERVICE MANUAL for the detail.

**34200-93J54-000** (White)

**34200-93J43-000** (Black)

Gauge Size 4" (101.6mm)

Applicable Model DF40A-200A

Exclusive for SUZUKI Troll Mode System. Automatically switches to low RPM scale when the SUZUKI Troll Mode System is activated.

**34200-93J34-000** (White)

**34200-93J22-000** (Black)

Gauge Size 4" (101.6mm)

Applicable Model DF8A-30A,DT30/40W

Full-scale 7000-RPM TACHOMETER can be used on electric-start models by using 4, 6 or 12 pole switch on rear of meter.

## TRIM GAUGE



White



Black

**34800-93J13-000** (White)

**34800-93J02-000** (Black)

Gauge Size 2" (50.8mm)

Applicable Model DF25A-250

Magnetic-type gauge shows trim angle for optimum performance and efficiency.

## FUEL GAUGE



White



Black

**34300-93J14-000** (White)

**34300-93J03-000** (Black)

Gauge Size 2" (50.8mm)

FUEL GAUGE alone works with the US Standard 240-30Ω sending unit.

## HOUR METER



White



Black

**34500-93J13-000** (White)

**34500-93J02-000** (Black)

Gauge Size 2" (50.8mm)

Applicable Model DF9.9B-250, DT30/40  
12-Volt-electric-motor driven meter.

## SPEEDOMETER SENDER ASSY



**34190-95500-000**



**34190-87D00-000**

## VOLTMETER



White



Black

**34600-93J13-000** (White)

**34600-93J02-000** (Black)

Gauge Size 2" (50.8mm)

Applicable Model DF9.9B-250, DT30/40

## WATER-PRESSURE GAUGE



White



Black

**34650-93J33-000** (White)

**34650-93J22-000** (Black)

Gauge Size 2" (50.8mm)

Applicable Model DF40A-250

Select an appropriate INSTALLATION KIT for each model.

## INSTALLATION KIT for WATER-PRESSURE GAUGE



**34660-90J04-000**

Applicable Model DF40A-140A

**34660-96J01-000**

Applicable Model DF150A/175A/200A

**34660-93J02-000**

Applicable Model DF200-250





# STEERING

## TILLER HANDLE KIT



**63002-88L2A-YAY**  
Applicable Model  
DF40A/50A

**63002-88L18-YAY**  
Applicable Model  
DF60A/50AV/60AV

**63002-87L20-YAY**  
Applicable Model  
DF70A-90A/100B  
(Year 2022~)

**63002-99L00-YAY**  
Applicable Model  
DF100C/115BT

## Main features



**Tachometer with warning indicators**



**Three-position angle adjustable bracket**



**Troll mode switch**  
- Activates SUZUKI Troll Mode System and controls RPM from idling engine speed up to 1200rpm at every 50rpm.



**Power trim & tilt switch and throttle grip friction adjuster**



## DUAL-ENGINE TIE-BAR



**67600-90J00-000**  
Stainless steel  
Applicable Model DF100C-140B

**67600-99L00-000**  
Stainless steel  
Applicable Model DF115BG/140BG

**67600-93J00-000**  
Stainless steel  
Applicable Model DF150A-200A/  
200-250  
DF150AP-200AP

## STEERING EXTENSION KIT



**67630-93J00-000**  
for installation of DUAL-ENGINE TIE-BAR  
(67600-93J00-000)  
Applicable Model DF150A-200A/200-250

## DRAG-LINK KIT \*67700- includes Steering Cable Seal



**67700-87L10-000**  
Applicable Model DF70A-90A/100B  
(Year 2022~)

**67700-93J00-000**  
Applicable Model DF40A-60A/  
200-250

**67700-96J00-000**  
Applicable Model DF150A-200A/  
150AP-200AP

**67701-87J11-000**  
Applicable Model DF40A-60A/  
200-250

**67701-87L10-000**  
Applicable Model DF70A-90A/100B  
(Year 2022~)

**67701-90J01-000**  
Applicable Model DF100C-140B

**67701-96J00-000**  
Applicable Model DF150A-200A/  
150AP-200AP

**67701-94420-000**  
Applicable Model DT25K/30

**67701-94L00-000**  
Applicable Model DF25A/30A

**67701-99J02-000**  
Applicable Model DF8A-DF20A

## STEERING-BRACKET ATTACHMENT



**43755-87L00-000**  
Applicable Model DF70A-90A/100B

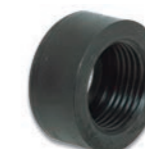
**43755-88L00-000**  
Applicable Model DF40A-60A

**43755-94L00-000**  
Applicable Model DF25A-30A

**43755-99J01-000**  
Applicable Model DF8A-20A

**43755-96320-000**  
Applicable Model DT25K/30/40W

## STEERING CABLE SEAL



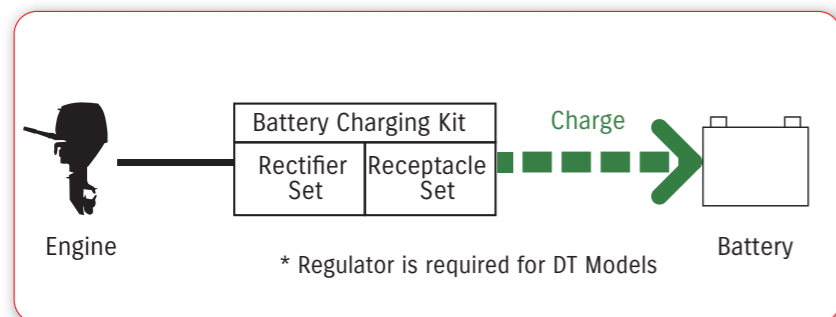
**41161-94400-000**  
Applicable Model DF8A-250,  
DT25K-40W



# ELECTRICAL PARTS

## BATTERY CHARGING KIT

• Optional equipment for charging Battery



### DT series

APPLICABLE MODEL	BATTERY CHARGING KIT			
	RECTIFIER SET	RECEPTACLE SET	REGULATOR	QTY
DT9.9A/15A	32801-93905-000	39600-93912-000	32500-95722-000 REGULATOR ASSY, VOLTAGE	1
			32590-93900-000 STAY, VOLTAGE REGULATOR	1
			02162-06127-000 SCREW, VOLTAGE REGULATOR	2
			08310-00067-000 NUT, VOLTAGE REGULATOR	2
			08321-01067-000 WASHER, VOLTAGE REGULATOR LOCK	2
			08322-01067-000 WASHER, VOLTAGE REGULATOR	2
			DT25K/30K	32801-96306-000
			02162-06127-000 SCREW, VOLTAGE REGULATOR	2
			08322-01067-000 WASHER, VOLTAGE REGULATOR	2
DT40W	32801-94403-000	39600-93912-000	32500-95722-000 REGULATOR ASSY, VOLTAGE	1
			02162-06127-000 SCREW, VOLTAGE REGULATOR	2
			08321-01067-000 WASHER	2

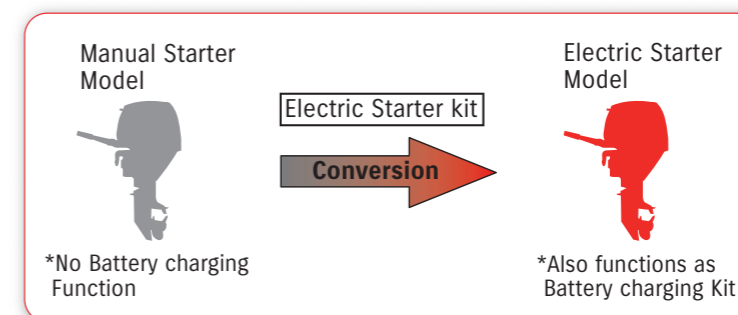
### DF series

APPLICABLE MODEL	BATTERY CHARGING KIT
	RECTIFIER and REGULATOR SET RECEPTACLE KIT
DF4A/5A/6A	32000-97L03-000 32801-97L01-000 39600-97L02-000
DF8A/9.9A	32000-99J03-000 32801-95J03-000 39600-94J03-000
DF9.9B/15A/20A	32000-89L03-000 32801-89L01-000 39600-89L02-000
DF25A/30A	32000-94L02-000 32800-88L01-000 39600-94L00-000 32815-94L00-000 (BRACKET) 01550-06207-000 (BOLT)



## ELECTRIC STARTER KIT

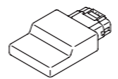
\* Electric Starter Kit functions as Battery charging Kit as well.



### DT series

APPLICABLE MODEL	ELECTRIC STARTER	QTY	REGULATOR	
				QTY
DT9.9A/15A	-	-	32500-95722-000 REGULATOR ASSY, VOLTAGE	1
			32590-93900-000 STAY, VOLTAGE REGULATOR	1
			02162-06127-000 SCREW, VOLTAGE REGULATOR	2
			08310-00067-000 NUT, VOLTAGE REGULATOR	2
			08321-01067-000 WASHER, VOLTAGE REGULATOR LOCK	2
			08322-01067-000 WASHER, VOLTAGE REGULATOR	2
			DT30	31101-96320-000 MOTOR SET, STARTING
	32102-96462-000 FLYWHEEL COMP, MAGNETO	1	02162-06127-000 SCREW, VOLTAGE REGULATOR	2
	32801-96306-000 RECTIFIER SET	1	08322-01067-000 WASHER, VOLTAGE REGULATOR	2
	33800-96308-000 SET, STARTING CABLE & SWITCH	1		
	33815-94501-000 PROTECTOR, STARTER CABLE	1		
	01550-06167-000 BOLT, CABLE PROTECTOR	1		
DT40W	36740-93901-000 CASE ASSY, FUSE	1	32500-95722-000 REGULATOR ASSY, VOLTAGE	1
	31101-94403-000 MOTOR SET, STARTING	1	02162-06127-000 SCREW, VOLTAGE REGULATOR	2
	32102-92L00-000 FLYWHEEL COMP, MAGNETO	1	08321-01067-000 WASHER	2
	32801-94403-000 RECTIFIER SET	1		
	33800-94437-000 SET, STARTING CABLE & SWITCH	1		

### DF series

APPLICABLE MODEL	ELECTRIC STARTER KIT	
DF8A/9.9A	31000-99J03-000	
DF25A/30A	31000-94L09-000	
DF9.9B/15A/20A	31000-89L09-000 (~Year 2017)	
	31000-89L21-000 (Year 2018-)	
	DF9.9B 33930-89L40-000	
	DF15A 33930-89L00-000	
	DF20A 33930-89L20-000	
	DF20A(P40) 33930-89L60-000	

\*When fitting to a non-Electric Starter model, please ensure to also replace the ECM with the ones shown here.

## BATTERY ISOLATOR LEAD SET

Optional equipment for charging additional battery.

### 33830-98J11-000

Applicable Model DF150A-200A/  
150AP-300AP/  
325A/350A/  
300BMD/350AMD





# FUEL SYSTEM

## FUEL TANK

NOTE : These tanks do not meet US-EPA requirements.



### 65000-99100-000

12-liter plastic tank without fuel-level gauge

Applicable Model DT9.9AK/25K/40WK (-K:For Gasoline)

### 65000-94L10-000

25-liter plastic tank with a fuel-level gauge

Applicable Model DF8A-140B, DT9.9AK-40W/WR (-K:For kerosene)

### 65000-89L10-000

12-liter plastic tank

Applicable Model DF4A-20A

## REPLACEMENT FUEL CAP

NOTE : Not US-EPA compatible.

### 65520-99100-000

Applicable Model DF5A-20A, DT9.9-40W

## FUEL-HOSE SOCKET



### 65750-98506-000

Metal, Inner diameter: 11.2 mm

Applicable Model DT9.9AK/25K/40WK



### 65750-87J11-000

Plastic, Inner diameter: 6.6 mm

Applicable Model DF4A/8A-30A



### 65750-95501-000

Metal, Inner diameter: 13.0 mm

Applicable Model DF8A/R-140A, DT9.9AK-25K/40WK

## FUEL CONNECTOR



### 65720-986B0-000

Engine side, Plastic

Applicable Model DF4A



### 65740-95D01-000

Tank side, Outer diameter: 13 mm, 1/4"NPT

Applicable Model DF8A/R-140A, DT9.9/K-40W/WR/WK

## SQUEEZE PUMP



### 65770-99J03-000

Small-in & Large-out

Applicable Model DF5A-6A, DT9.9AK/15AK/40WK

### 65770-90J13-000

Large-in & Large-out

Applicable Model DF8A-20A/40A-140A, DT9.9AK/15AK/40WK

### 65770-93J13-000

Large-in & Large-out

Applicable Model DF150A-350A

### 65770-87DL1-000

Large-in & Small-out

Applicable Model DT9.9A-40W

### SQUEEZE PUMP

(US-EPA compatible.)

### 65770-94J04-000

Small-in & Large-out

Applicable Model DF6A

### 65770-90J04-000

Large-in & Large-out

Applicable Model DF8A-140A

### 65770-93J04-000

Large-in & Large-out

Applicable Model DF150A-350A

## FUEL-HOSE

### 09352-73124-00D

I/D 7.3 , O/D 12.5

LENGTH 4,000mm

Not US-EPA compatible

## FUEL-HOSE COMPONENT



### 65700-87J19-000

for 25-liter plastic tank to engine

Applicable Model DF8A-20A

### 65700-90J18-000

for 25-liter plastic tank to engine

Applicable Model DF40A-60A

### 65700-90J24-000

for 25-liter plastic tank to engine

Applicable Model DF70A-140A

### 65700-93J14-000

for fuel tank to engine

Applicable Model DF150A-350A

### 65700-87DL2-000

for 25-liter plastic tank to engine

Applicable Model DT9.9A-40W

### 65700-95D08-000

for 12-liter plastic tank to engine (gasoline)

Applicable Model DT9.9AK/15AK/25K/40WK

### 65700-96364-000

for 25-liter plastic tank to engine (kerosene)

Applicable Model DT9.9AK/15AK/40WK

### 65700-94440-000

with fuel filter (gasoline)

Applicable Model DT9.9AK/15AK/40WK

### 65700-94434-000

with fuel filter (kerosene)

Applicable Model DT9.9AK/15AK

Only for P36 ver.

### FUEL-HOSE COMPONENT

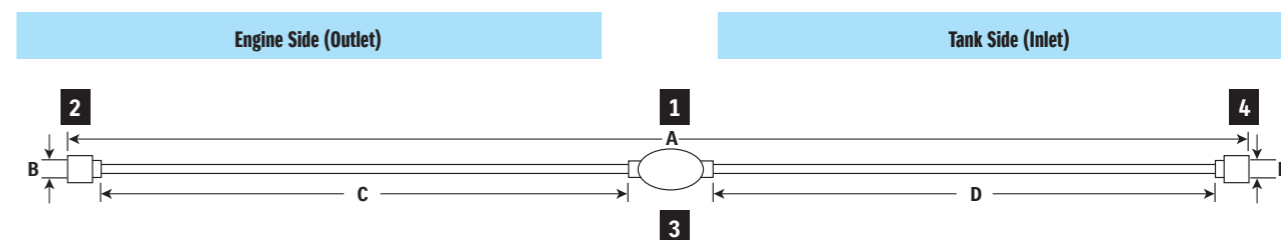
(US-EPA compatible.)

### 65700-87J28-000

Applicable Model DF5A-30A

### 65700-88L06-000

Applicable Model DF40A-60A



## FUEL-HOSE COMPONENT Chart

<b>1</b> FUEL-HOSE COMPONENT	<b>2</b> FUEL-HOSE SOCKET Metal	Plastic	<b>3</b> SQUEEZE PUMP	<b>4</b> FUEL-HOSE SOCKET Metal
------------------------------	---------------------------------	---------	-----------------------	---------------------------------



1 FUEL HOSE COMPONENT	2 SOCKET			- HOSE			3 SQUEEZE PUMP	- HOSE			4 SOCKET				
	Part Number	A Length (mm)	Material	B I/D (mm)	Part Number	C Length (mm)		I/D (mm)	O/D (mm)	D Length (mm)	I/D (mm)	O/D (mm)	Material	E I/D (mm)	Part Number
65700-87J19-000	1970	Plastic	6.6	65700-87J11-000	700	7.3	12.5	65770-90J13-000	1100	7.3	12.5	Metal	13.0	65750-95501-000	
65700-90J18-000	1250	(no socket)	-	-	(no hose)	-	-	65770-90J13-000	1100	7.3	12.5	Metal	13.0	65750-95501-000	
65700-90J24-000	1930	(no socket)	-	-	700	7.3	12.5	65770-90J13-000	1100	7.3	12.5	Metal	13.0	65750-95501-000	
65700-93J14-000	3100	(no socket)	-	-	750	9.0	15.0	65770-93J13-000	2250	Large	9.0	15.0	(no socket)	-	
65700-87DL2-000	2550	Metal	11.2	65750-98506-000	300	Small	5.3	10.5	65770-87DL1-000	2090	Large	7.3	12.5	Metal	13.0
65700-95D08-000	2550	Metal	13.0	65750-95501-000	300	7.3	12.5	65770-99J03-000	2090	5.3	10.5	Metal	11.2	65750-98506-000	
65700-96364-000	2620	Metal	11.2	65750-98506-000	300	5.3	10.5	-	2250	7.3	12.5	Metal	13.0	65750-95501-000	
65700-94440-000	3100	Metal	13.0	65750-95501-000	300	7.3	12.5	65770-90J13-000	2600	7.3	12.5	-	-	-	
65700-94434-000	3100	Plastic	13.8	65750-94404-000	3000	7.3	12.5	-	-	-	-	-	-	-	
65700-87J28-000	2000	Plastic	6.6	65750-87J11-000	700	7.3	12.5	65770-90J03-000	1100	7.3	12.5	Metal	13.0	65750-95501-000	
65700-88L06-000	1280	(no socket)	-	-	(no hose)	-	-	65770-90J03-000	1100	7.3	12.5	Metal	13.0	65750-95501-000	

## WATER SEPARATOR / FUEL FILTER



### 65900-98J11-000

Applicable Model DF5A-DF140A, DT9.9A-DT40

### 65900-98J21-000

Applicable Model DF150A-DF350A

## WATER SEPARATOR/FUEL FILTER ELEMENT SET



### 65910-98J01-000

Applicable Model DF5A-DF350A, DT9.9A-DT40





# SUZUKI PROPELLERS

## WATERGRIP

WATERGRIP is a stainless-steel propeller series offering accurate response to User operation. Converting engine power into propulsion with high efficiency, this propeller series meets our customer's demand for bigger, faster, more powerful outboards. The WATERGRIP propeller series employs a new interchangeable and square shaped propeller bush that minimises power loss in delivery.

\*This picture was taken remotely

### WATERGRIP



The WATERGRIP series will be the new standard for Suzuki propellers. The interchangeable square-shaped bush system is designed for quick and easy replacement when required, and also accurately and efficiently converts power from the engine to thrust through the propeller.

### WATERGRIP DUAL



Our flagship models, the DF350A, DF325A and DF300B, introduced the Suzuki Dual Prop System, an industry-leading technology, which delivers outstanding and exciting performance. The two contra-rotating propellers, operating simultaneously, enables greater conversion efficiency as well as better stability, grip, and manoeuvrability.

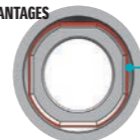
### WATERGRIP SPORT



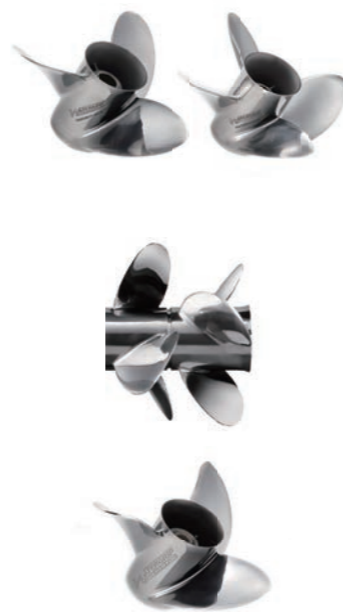
The WATERGRIP SPORT propellers feature a high rake blade design for excellent acceleration and exceptional top speed. These propellers are ideal for lightweight sports boats as they give remarkably stable thrust when turning for superior manoeuvrability.

#### PROPELLER BUSH ADVANTAGES

Interchangeable bush with better resistance over propeller slip



Better resistance over propeller slip  
Interchangeable bush



#### Applicable Model : DF150/150AP, DF175/DF175AP, DF200/DF200AP, DF225, DF250/DF250AP, DF300AP

Type	Material	Blade	Diameter		Pitch		Rotation*	Part number
			in	(mm)	in	(mm)		
Watergrip	Stainless	3	16	(406.4)	15	(381)	RR	58700-93L81-000
Watergrip	Stainless	3	16	(406.4)	17	(431.8)	RR	58700-93L01-000
Watergrip	Stainless	3	16	(406.4)	18 1/2	(469.9)	RR	58700-93L11-000
Watergrip	Stainless	3	16	(406.4)	20	(508)	RR	58700-93L21-000
Watergrip	Stainless	3	16	(406.4)	21 1/2	(546.1)	RR	58700-93L31-000
Watergrip	Stainless	3	16	(406.4)	23	(584.2)	RR	58700-93L41-000
Watergrip	Stainless	3	16	(406.4)	24 1/2	(622.3)	RR	58700-93L51-000
Watergrip	Stainless	3	16	(406.4)	26	(660.4)	RR	58700-93L61-000
Watergrip	Stainless	3	16	(406.4)	27 1/2	(698.5)	RR	58700-93L70-000
Watergrip	Stainless	3	16	(406.4)	17	(431.8)	CR	58800-93L00-000
Watergrip	Stainless	3	16	(406.4)	18 1/2	(469.9)	CR	58800-93L10-000
Watergrip	Stainless	3	16	(406.4)	20	(508)	CR	58800-93L20-000
Watergrip	Stainless	3	16	(406.4)	21 1/2	(546.1)	CR	58800-93L30-000
Watergrip	Stainless	3	16	(406.4)	23	(584.2)	CR	58800-93L40-000
Watergrip	Stainless	3	16	(406.4)	24 1/2	(622.3)	CR	58800-93L50-000
Watergrip	Stainless	3	16	(406.4)	26	(660.4)	CR	58800-93L60-000
Watergrip	Stainless	3	15 1/2	(393.7)	17	(431.8)	RR	58700-96J00-000
Watergrip	Stainless	3	15 1/4	(387.4)	19	(482.6)	RR	58700-96J10-000
Watergrip	Stainless	3	15	(381)	21	(533.4)	RR	58700-96J20-000
Watergrip	Stainless	3	14 3/4	(374.7)	23	(584.2)	RR	58700-96J30-000
Watergrip	Stainless	3	14 1/2	(368.3)	25	(635)	RR	58700-96J40-000
Watergrip	Stainless	3	14 1/2	(368.3)	27	(685.8)	RR	58700-96J50-000
Watergrip	Stainless	3	15 1/2	(393.7)	17	(431.8)	CR	58800-96J00-000
Watergrip	Stainless	3	15 1/4	(387.4)	19	(482.6)	CR	58800-96J10-000
Watergrip	Stainless	3	15	(381)	21	(533.4)	CR	58800-96J20-000
Watergrip	Stainless	3	14 3/4	(374.7)	23	(584.2)	CR	58800-96J30-000
Watergrip	Stainless	3	14 1/2	(368.3)	25	(635)	CR	58800-96J40-000
Watergrip	Stainless	3	14 1/2	(368.3)	27	(685.8)	CR	58800-96J50-000
Watergrip	Stainless	4	15 1/4	(387.4)	18	(457.2)	RR	58700-93J00-000
Watergrip	Stainless	4	15 1/4	(387.4)	20	(508)	RR	58700-93J10-000
Watergrip	Stainless	4	15 1/4	(387.4)	22	(558.8)	RR	58700-93J20-000
Watergrip	Stainless	4	15 1/4	(387.4)	24	(609.6)	RR	58700-93J30-000
Watergrip	Stainless	4	15 1/4	(387.4)	26	(660.4)	RR	58700-93J40-000
Watergrip	Stainless	4	15 1/4	(387.4)	20	(508)	CR	58800-93J10-000
Watergrip	Stainless	4	15 1/4	(387.4)	22	(558.8)	CR	58800-93J20-000
Watergrip	Stainless	4	15 1/4	(387.4)	24	(609.6)	CR	58800-93J30-000
Watergrip	Stainless	4	15 1/4	(387.4)	26	(660.4)	CR	58800-93J40-000
Watergrip Sport	Stainless	3	15	(381)	19	(482.6)	RR	58700-96L00-000
Watergrip Sport	Stainless	3	14 7/8	(377.8)	21	(533.4)	RR	58700-96L10-000
Watergrip Sport	Stainless	3	14 1/2	(368.3)	23	(584.2)	RR	58700-96L20-000
Watergrip Sport	Stainless	3	14 1/4	(362)	25	(635)	RR	58700-96L30-000
Watergrip Sport	Stainless	3	14	(355.6)	27	(685.8)	RR	58700-96L40-000

#### Applicable Model : DF300B, DF325A, DF350A

Type	Material	Blade	Diameter		Pitch		Part number
			in	(mm)	in	(mm)	
Watergrip Dual	Stainless	3	15 1/2	(393.7)	12	(304.8)	58500-98LA0-000 (Front) 58600-98LA1-000 (Rear)
Watergrip Dual	Stainless	3	15 1/2	(393.7)	15	(381)	58500-98LB0-000 (Front) 58600-98LB1-000 (Rear)
Watergrip Dual	Stainless	3	15 1/2	(393.7)	16 1/2	(419.1)	58500-98LC0-000 (Front) 58600-98LC1-000 (Rear)
Watergrip Dual	Stainless	3	15 1/2	(393.7)	18	(457.2)	58500-98L90-000 (Front) 58600-98L91-000 (Rear)
Watergrip Dual	Stainless	3	15 1/2	(393.7)	19 1/2	(495.3)	58500-98L60-000 (Front) 58600-98L61-000 (Rear)
Watergrip Dual	Stainless	3	15 1/2	(393.7)	21	(533.4)	58500-98L00-000 (Front) 58600-98L01-000 (Rear)
Watergrip Dual	Stainless	3	15 1/2	(393.7)	22 1/2	(571.5)	58500-98L10-000 (Front) 58600-98L11-000 (Rear)
Watergrip Dual	Stainless	3	15 1/2	(393.7)	24	(609.6)	58500-98L20-000 (Front) 58600-98L21-000 (Rear)
Watergrip Dual	Stainless	3	15 1/2	(393.7)	25 1/2	(647.7)	58500-98L30-000 (Front) 58600-98L31-000 (Rear)
Watergrip Dual	Stainless	3	15 1/2	(393.7)	27	(685.8)	58500-98L40-000 (Front) 58600-98L41-000 (Rear)
Watergrip Dual	Stainless	3	15 1/2	(393.7)	28 1/2	(723.9)	58500-98L50-000 (Front) 58600-98L51-000 (Rear)
Watergrip Dual	Stainless	3	15 1/2	(393.7)	30	(762)	58500-98L70-000 (Front) 58600-98L71-000 (Rear)
Watergrip Dual	Stainless	3	15 1/2	(393.7)	31 1/2	(800.1)	58500-98L80-000 (Front) 58600-98L81-000 (Rear)



# PROPELLER LINE-UP

Model	Type	Material	Blade	Diameter		Pitch		Rotation*	Description	Part number
				in	(mm)	in	(mm)			
DF2.5	A520	Aluminum	3	7 3/8	(187.3)	5 3/8	(136.5)	RR		58110-97JA0-019
DF4A	C601	Aluminum	3	7 1/2	(190.5)	6	(152.4)	RR		58110-91JL0-019
DF5A	C611	Aluminum	3	7 1/2	(190.5)	6 1/2	(165.1)	RR		58110-91JM0-019
DF6A	C701	Aluminum	3	7 1/2	(190.5)	7	(177.8)	RR		58110-91JN0-019
DF8A	M701	Aluminum	3	9 1/4	(235)	7	(177.8)	RR		58100-89L00-019
DF9.9A	M821	Aluminum	3	9 1/4	(235)	8	(203.2)	RR	THICK	58100-90L41-019
	M901	Aluminum	3	9 1/4	(235)	9	(228.6)	RR		58100-89L20-019
	M911	Aluminum	3	9 1/4	(235)	9	(228.6)	RR	THICK	58100-90L50-019
	M1001	Aluminum	3	9 1/4	(235)	10	(254)	RR		58100-89L60-019
	M1011	Aluminum	3	9 1/4	(235)	10	(254)	RR	THICK	58100-90L21-019
	M1101	Aluminum	3	9 1/4	(235)	11	(279.4)	RR		58100-89L70-019
DF9.9B		Aluminum	4	10	(254)	5	(127)	RR	High thrust	58100-94JA2-019
DF15A		Aluminum	4	10	(254)	7	(177.8)	RR	High thrust	58100-94JB1-019
DF20A		Aluminum	3	9 1/4	(235)	7	(177.8)	RR		58100-89L00-019
		Aluminum	3	9 1/4	(235)	8	(203.2)	RR	THICK	58100-90L41-019
DT9.9A		Aluminum	3	9 1/4	(235)	9	(228.6)	RR		58100-89L20-019
DT15A		Aluminum	3	9 1/4	(235)	9	(228.6)	RR	THICK	58100-90L50-019
		Aluminum	3	9 1/4	(235)	10	(254)	RR		58100-89L60-019
		Aluminum	3	9 1/4	(235)	10	(254)	RR	THICK	58100-90L60-019
		Aluminum	3	9 1/4	(235)	11	(279.4)	RR		58100-89L70-019
		Aluminum	3	9 1/4	(235)	12	(304.8)	RR		58100-89L50-019
DF25A	P911	Aluminum	3	10 1/4	(260.3)	9	(228.6)	RR	THICK	58100-96372-019
DF30A	P1001	Aluminum	3	10 1/4	(260.3)	10	(254)	RR		58100-91L40-019
DT25	P1011	Aluminum	3	10 1/4	(260.3)	10	(254)	RR	THICK	58100-96472-019
DT30	P1101	Aluminum	3	10 1/4	(260.3)	11	(279.4)	RR		58100-91L50-019
	P1201	Aluminum	3	10 1/4	(260.3)	12	(304.8)	RR		58100-91L20-019
	P1211	Aluminum	3	10 1/4	(260.3)	12	(304.8)	RR	THICK	58100-96482-019
	P1301	Aluminum	3	10 1/4	(260.3)	13	(330.2)	RR		58100-91L30-019
	P1311	Aluminum	3	10 1/4	(260.3)	13	(330.2)	RR	THICK	58100-96492-019
	P1401	Aluminum	3	10 1/4	(260.3)	14	(355.6)	RR		58100-95D01-019
	P1501	Aluminum	3	10 1/4	(260.3)	15	(381)	RR		58100-96462-019
DF40A	S900	Aluminum	3	11 1/2	(292.1)	9	(228.6)	RR		58100-88LC0-019
DF50A	S1000	Aluminum	3	11 1/2	(292.1)	10	(254)	RR		58100-88LD0-019
DF60A	S1100	Aluminum	3	11 1/2	(292.1)	11	(279.4)	RR		58100-88LE0-019
DT40	S1200	Aluminum	3	11 5/8	(295.3)	12	(304.8)	RR		58100-88LA0-019
	S1301	Aluminum	3	11 1/2	(292.1)	13	(330.2)	RR		58100-88LB0-019
	S1400	Aluminum	3	11 3/8	(288.9)	14	(355.6)	RR		58100-88L50-019
	S1500	Aluminum	3	11 1/4	(285.8)	15	(381)	RR		58100-88L62-019
	S1600	Aluminum	3	11 1/8	(282.6)	16	(406.4)	RR		58100-88L72-019
	S1700	Aluminum	3	11	(279.4)	17	(431.8)	RR		58100-88LF0-019
	SS1600	Stainless	3	11 1/8	(282.6)	16	(406.4)	RR		58200-88L30-000
DF50AV		Aluminum	3	14	(355.6)	9	(228.6)	RR		58100-87LG1-019
DF60AV		Aluminum	3	14	(355.6)	11	(279.4)	RR		58100-87LH0-019
		Aluminum	3	13 3/4	(349.3)	12	(304.8)	RR		58100-87LJ0-019
		Aluminum	3	14	(355.6)	13	(330.2)	RR		58100-87LA0-019
		Aluminum	3	13 7/8	(352.4)	15	(381)	RR		58100-87LB0-019
		Aluminum	3	13 3/4	(349.3)	17	(431.8)	RR		58100-87LC0-019
DF70A		Aluminum	3	14	(355.6)	13	(330.2)	RR		58100-87LA0-019
DF80A		Aluminum	3	13 7/8	(352.4)	15	(381)	RR		58100-87LB0-019
DF90A		Aluminum	3	13 3/4	(349.3)	17	(431.8)	RR		58100-87LC0-019
DF100B		Aluminum	3	13 3/4	(349.3)	19	(482.6)	RR		58100-87LD0-019
		Aluminum	3	13 3/4	(349.3)	21	(533.4)	RR		58100-87LE0-019
		Aluminum	3	13 3/4	(349.3)	23	(584.2)	RR		58100-87LF0-019
		Aluminum	3	13 1/2	(342.9)	15	(381)	RR		58100-90JE0-019
		Aluminum	3	14	(355.6)	17	(431.8)	RR		58100-90JA0-019
		Aluminum	3	14	(355.6)	19	(482.6)	RR		58100-90JB0-019
		Aluminum	3	14	(355.6)	21	(533.4)	RR		58100-90JC0-019
		Aluminum	3	14	(355.6)	23	(584.2)	RR		58100-90JD0-019
		Stainless	3	13 7/8	(352.4)	15	(381)	RR		58200-92J40-000
		Stainless	3	13 7/8	(352.4)	17	(431.8)	RR		58200-92J50-000
		Stainless	3	13 7/8	(352.4)	19	(482.6)	RR		58200-92J60-000
		Stainless	3	13 7/8	(352.4)	21	(533.4)	RR		58200-92J70-000
		Stainless	3	13 7/8	(352.4)	23	(584.2)	RR		58200-92J80-000
		Stainless	3	13 7/8	(352.4)	25	(635)	RR		58200-92J90-000

\*RR:Regular-Rotation model, CR:Counter-Rotation model

Model	Type	Material	Blade	Diameter		Pitch		Rotation*	Description	Part number
				in	(mm)	in	(mm)			
DF100C		Aluminum	3	13 1/2	(342.9)	15	(381)	RR		58100-90JE0-019
DF115B		Aluminum	3	14	(355.6)	17	(431.8)	RR		58100-90JA0-019
DF115BG		Aluminum	3	14	(355.6)	19	(482.6)	RR		58100-90JB0-019
DF140B		Aluminum	3	14	(355.6)	21	(533.4)	RR		58100-90JC0-019
DF140BG		Aluminum	3	14	(355.6)	23	(584.2)	RR		58100-90JD0-019
		Stainless	3	13 7/8	(352.4)	15	(381)	RR		58200-92J40-000
		Stainless	3	13 7/8	(352.4)	17	(431.8)	RR		58200-92J50-000
		Stainless	3	13 7/8	(352.4)	19	(482.6)	RR		58200-92J60-000
		Stainless	3	13 7/8	(352.4)	21	(533.4)	RR		58200-92J70-000
		Stainless	3	13 7/8	(352.4)	23	(584.2)	RR		58200-92J80-000
		Stainless	3	13 7/8	(352.4)	25	(635)	RR		58200-92J90-000
		Stainless	3	13 7/8	(352.4)	17	(431.8)	CR		58200-92JA0-000
		Stainless	3	13 7/8	(352.4)	19	(482.6)	CR		58200-92JB0-000
		Stainless	3	13 7/8	(352.4)	21	(533.4)	CR		58200-92JC0-000
		Stainless	3	13 7/8	(352.4)	23	(584.2)	CR		58200-92JD0-000

## HARDWARE FOR PROPELLER

Applicable Model	STOPPER	PROPELLER BUSH	HARDWARE KIT					
			SPACER	WASHER	STOPPER	NUT	COTTER PIN	
DF2.5	57635-91JL0-000	58120-97JA0-000	N/A	-	-	-	58130-91JL0-000	09204-03003-000
DF4A/5A/6A	57635-97L00-000	58120-91JL0-000	N/A	-	-	-	58130-91JL0-000	09204-03003-000
DF8A/9.9A	57632-94J00-000	58120-89L00-000	N/A	-	09160-12066-000	-	09141-12005-000	09204-02004-000
DF9.9B/15A/20A	57632-94J00-000	58120-89L00-000	N/A	-	09160-12066-000	-	09141-12005-000	09204-02004-000
DT9.9A/15A	57632-94J00-000	58120-89L00-000	N/A	-	09160-12066-000	-	09141-12005-000	09204-02004-000
DF25A/30A	57632-91L00-000	58120-96401-000	57630-96300-000	57633-96300-000	09160-14028-000	-	09141-14008-000	09204-03003-000
DT25/30	57632-91L00-000	58120-96401-000	57630-96300-000	57633-96300-000	09160-14028-000	-	09141-14008-000	09204-03003-000
DF40A/50A/60A	57632-95320-000	58120-88L01-000	57630-94301-000	57633-94301-000	09160-18028-000	-	09141-18005-000	09204-03003-000
DT40	57632-92L00-000	58120-88L01-000	57630-92L01-000	57633-92L00-000	09160-16054-000	-	09141-16008-000	09204-03003-000
DF50AV/60AV	57635-90J01-000	58105-90J00-000	57630-90J00-000	57633-90J02-000	09160-18028-000	-	09141-18005-000	09204-03003-000
DF70A/80A/90A/100B	57632-87L01-000	58105-90J00-000	57630-90J00-000	57633-90J02-000	09160-18028-000	-	09141-18005-000	09204-03003-000
DF100C/115B/115BG/140B/140BG	57635-92J01-000	58105-90J00-000	57630-90J00-000	57633-90J02-000	09160-18028-000	-	09141-18005-000	09204-03003-000
DF150A-300AP	57632-93L11-000	58120-93L00-000	57630-93L00-000	57633-93L00-000	09160-18028-000	-	09141-18005-000	09204-03003-000
DF300B/DF325A/350A Front	58531-98L00-000	58520-98L00-000	58540-98L01-000	58541-98L00-000	-	58551-98L00-000	58561-98L01-000	-
DF300B/DF325A/350A Rear	58631-98L01-000	58620-98L00-000	58640-98L00-000	58641-98L00-000	09160-18019-000	-	09141-18005-000	09204-03003-000

## Choosing The Right Propeller

Propeller selection is very important in the performance of the boat. Acceleration, speed, fuel efficiency, stability and engine RPM all are affected by the propeller. Operating requirements and conditions will also determine which design, style and pitch of the propeller your customer can choose. The combination of boat, engine and appropriate propeller size may have already been tested by the boat manufacturer.

**Your Customer may need your assistance to determine the correct propeller for their application.**

### Stainless Steel Propellers

Suzuki Stainless Steel Propellers offer high performance and durability. Their aggressive design enhances the overall performance of the boat and the durability of stainless steel ensures long term dependability. Suzuki Stainless Steel propellers are also fitted with a rubber cushion hub to help absorb vibration and shock should they strike a foreign object.

### Propeller Sizing

When referring to propeller size, the first number is the number of blades, the second number details the **diameter** of the propeller, and the third number is the **pitch**

Example: **3 x 13 x 18** = 3 blades x Diameter: 13 inches x Pitch: 18 inches.

The pitch is the most significant factor when choosing a propeller.

</



# MAINTAINING YOUR SUZUKI

## OBM ENGINE OIL ECSTAR V7000 SEMI-SYNTHETIC



**99000-26310-400**  
ECSTAR V7000 4T 10W-40(4Lx4pcs)

**99000-26310-100**  
ECSTAR V7000 4T 10W-40(1Lx24pcs)

Thai Suzuki Motor Products  
Plastic bottle with a cap



**99000-21EA2-047**  
ECSTAR V7000 10W-40 4L(4Lx6pcs)

**99000-21EA2-017**  
ECSTAR V7000 10W-40 1L(1Lx20pcs)

Suzuki Motor Corporation (Japan) Products  
Metal can with a cap

### ◆ FEATURES

- Help to protect engines in severe conditions.
- Contribute to improve engine response.
- Viscosity index improvers help engine start easily.
- Advanced detergents keep engine parts clean.
- Special additives help protect engine in both salt and fresh water environments.

## OBM ENGINE OIL ECSTAR V5000 MINERAL



Thai Suzuki Motor Products  
Plastic bottle with a cap

### ◆ FEATURES

Premium oil that has been designed especially for Suzuki marine engines does not only end with ECSTAR V7000. To meet your demand, we have set ECSTAR V5000. High quality based oil gives your four stroke outboard engine an outstanding performance for wear protection, viscosity stability, low volatility and excellent protection against rust and corrosion.

**99000-26210-400**  
ECSTAR V5000 4T 10W-40(4Lx4pcs)

**99000-26210-100**  
ECSTAR V5000 4T 10W-40(1Lx24pcs)

## ECSTAR OBM GEAR OIL SAE-90



**99000-22BA2-000**  
ECSTAR OBM GEAR OIL 4L(4Lx6pcs)  
Metal can with cap

**99000-22B55-000**  
ECSTAR OBM GEAR OIL 800ML(800mx1pcs)  
Plastic tube with a cap & an attachment nozzle

**99000-22B48-000**  
ECSTAR OBM GEAR OIL 400ML(400mx24pcs)  
Plastic tube with a cap & an attachment nozzle

Suzuki Motor Corporation (Japan) Products

## Replacement Guideline (Engine oil & Gear oil)

Interval	1st time	20 hours or 1 month*
	From 2nd time	100 hours or 1 year*

\*Whichever comes first.  
This guideline may vary by outboard model, condition of use, region, etc.



# CARE & MAINTENANCE ITEM

## SUZUKI GENUINE OIL



**99000-26120-050**  
0.5L x 24pcs  
Plastic bottle with a cap

**99000-26120-100**  
1L x 24pcs  
Plastic bottle with a cap

### 2-STROKE ENGINE OIL "PREMIUM"

1 liter  
Plastic bottle with a cap

\* Availability may differ in some regions.  
Please contact Thai Suzuki Motor Co, Ltd. for more information and making an order.



### 2-STROKE ENGINE OIL CCIS SUPER OIL

**99000-21740-007**  
1 liter  
Metal can with a cap & nozzle

## SUZUKI MARINE by MOTUL (Suzuki Approved)



**4-STROKE ENGINE OIL**  
SAE 10W-30 Semi-Synthetic  
5 liter, FC-W



**4-STROKE ENGINE OIL**  
SAE 10W-40 Semi-Synthetic  
5 liter, FC-W



**2-STROKE ENGINE OIL (TC-W3)**  
High Performance 2T Engine OIL  
1 liter, TC-W3



**MARINE GEAR OIL**  
SAE 90, GL-5  
0.35 liter

\* 4 kinds (1L, 5L, 60L, 208L) of Engine oil volume and 3 kinds (0.35L, 1L, 208L) of Gear oil are available. Please ask your local MOTUL dealer.

## GREASE



**99000-25480-000**  
SUPER GREASE-A  
450 grams (15.8 oz) for Crank oil seal



**99000-25520-000**  
WATER RESISTANT GREASE EP2  
250 grams (8.8 oz)



**99000-25140-000**  
MOLY PASTE  
50 grams (1.7 oz)



## PTT FLUID

**99000-22B00-000**  
Metal can with a cap  
1 liter

## LIQUID GASKET



**93691-80030-000**  
SILICONE SEAL KE45T  
100 grams



**99000-31140-000**  
1207B (BLACK)  
100 grams (3.5 oz)

## FLUSHING TOOL

**99000-81202-000**  
Applicable Model DF300B/325A/350A  
(~Year 2022)

**99000-81210-000**  
Applicable Model DF300B/325A/350A  
(Year 2023~)

## THREAD LOCK



**99000-32020-000**  
1333B (RED)  
50 grams (1.7 oz)



**99000-32160-000**  
1342H (BLUE)  
50 grams (1.7 oz)

## FLUSH-HOSE ATTACHMENT



**55181-95200-000**  
Applicable Model DF4A-6A/40A-60A,  
DT25K-40W



**17917-87L00-000**  
Applicable Model DF8A-350A

## ZINC ANODE for saltwater



**55300-95500-000**  
Applicable Model DF8A/9.9A/40A-60A,  
DT9.9AK-40W



**55321-90J01-000**  
Applicable Model DF50AV/60AV/  
100C-140B



**55321-87J11-000**  
Applicable Model DF4A-350A,  
DT9.9A/15A



**55321-94910-000**  
Applicable Model DF70A-350A

## ALUMINUM ANODE for brackish water, saltwater



**55321-87J01-000**  
Applicable Model DF2.5-350A,  
DT9.9AK-40W



**55320-94900-000**  
Applicable Model DF60A-350A



**55321-95J00-000**  
Applicable Model DF2.5, DF4A-6A

**55321-93J01-000**  
Applicable Model DF70A-100C/100B/  
DF150A-350A

## ANODE BULK PACK

**55321-87810-B50**  
Applicable Model DF2.5-350A,  
DT9.9AK-40W  
55321-87J01 x 50pcs in one package

## ENGINE COVER



**99000-81700-000**  
Applicable Model DF8A-20A,  
DT9.9A-15A

**99000-81710-000**  
Applicable Model DF25-60A,  
DT25/30

**99000-81720-000**  
Applicable Model DF70A-90A/100B,  
DT40

**99000-81730-000**  
Applicable Model DF100C/115B/  
115BG,140B/  
140BG,  
DF200T/Z-250T/Z

**99000-81740-000**  
Applicable Model DF150A-200A/  
175AP/200AP/  
250AP/300AP

**99000-81750-000**  
Applicable Model DF300B/325A/  
350A



# MAINTENANCE KIT

SUZUKI highly recommends you to replace your outboard motor with Maintenance Kits every 100 hours or 1 year, whichever comes first.



### ALL LINEUP For 2 STROKE OBM

MODEL YEAR	KIT PART NUMBER	PART NUMBER	PART NAME	QTY
DT9,9/15 (A) ('13-)	17400-90830	17400-90L01-000	WATER PUMP REPAIR SET	1
		09204-02004-000	PIN	1
		09482-00533-000	PLUG,SPARK(BR7HS-10)	2
		17685-91D00-000	GASKET,THERMOSTAT COVER	1
		55321-87J01-000	ANODE,PROTECTION	2
		55321-90L00-000	ZINC SET,PROTECTION	1
DT30 ('12)	17400-91851	17400-94413-000	KIT, WATER PUMP REPAIR	1
		09168-10022-000	GASKET(10X17X1.5)	2
		09204-03003-000	PIN	1
		09482-00533-000	PLUG,SPARK(BR7HS-10)	2
		17685-96300-000	GASKET,THERMOSTAT COVER	1
		55320-95311-000	ZINC SET,PROTECTION	1
DT30 ('13-14)	17400-91821	17400-94413-000	KIT, WATER PUMP REPAIR	1
		09168-10022-000	GASKET(10X17X1.5)	2
		09204-03003-000	PIN	1
		09482-00533-000	PLUG,SPARK(BR7HS-10)	2
		17685-96300-000	GASKET,THERMOSTAT COVER	1
		17400-94L30-000	KIT, WATER PUMP REPAIR	1
DT30 ('15-)	17400-91881	09204-03003-000	PIN	1
		09482-00533-000	PLUG,SPARK(BR7HS-10)	2
		17685-96300-000	GASKET,THERMOSTAT COVER	1
		55321-87J01-000	ANODE,PROTECTION	1
		59178-97J00-000	GASKET,DRAIN PLUG	2
		17400-94413-000	KIT, WATER PUMP REPAIR	1
DT40W/40WR ('07LATE-'12)	17400-92831	09168-10022-000	GASKET(10X17X1.5)	2
		09204-03003-000	PIN	1
		09482-00370-000	PLUG,SPARK(BR8HS-10)	2
		17685-94410-000	GASKET,THERMOSTAT COVER	1
		55320-95311-000	ZINC SET,PROTECTION	1
		17400-94413-000	KIT, WATER PUMP REPAIR	1
DT40W/40WR ('13-)	17400-92811	09168-10022-000	GASKET(10X17X1.5)	2
		09204-03003-000	PIN	1
		09482-00370-000	PLUG,SPARK(BR8HS-10)	2
		17685-94410-000	GASKET,THERMOSTAT COVER	1

### ALL LINEUP For 4 STROKE OBM

MODEL YEAR	KIT PART NUMBER	PART NUMBER	PART NAME	QTY
DF2/2.5 ('06-'11)	17400-97820	09168-10022-000	GASKET(10X17X1.5)	1
		09202-02006-000	PIN(2.9X14)	1
		09204-02001-000	PIN	1
		09280-33005-000	O RING(D:1.9, ID:32.7)	1
		09482-00406-000	PLUG,SPARK(CR6HSA)	1
		17461-97JM0-000	IMPELLER,WATER PUMP	1
		17471-97J00-000	PANEL,PUMP CASE UNDER	1
		17472-97J00-000	GASKET,PUMP CASE PANEL	1
		55321-87J01-000	ANODE,PROTECTION	1
		59178-97J00-000	GASKET,DRAIN PLUG	2
		09168-10022-000	GASKET(10X17X1.5)	1
		09202-02006-000	PIN(2.9X14)	1
DF2/2.5 ('12-)	17400-97810	09204-03003-000	PIN	1
		09280-33005-000	O RING(D:1.9, ID:32.7)	1
		09482-00406-000	PLUG,SPARK(CR6HSA)	1
		17461-97JM0-000	IMPELLER,WATER PUMP	1
		17471-97J00-000	PANEL,PUMP CASE UNDER	1
		17472-97J00-000	GASKET,PUMP CASE PANEL	1
		55321-87J01-000	ANODE,PROTECTION	1
		59178-97J00-000	GASKET,DRAIN PLUG	2

MODEL YEAR	KIT PART NUMBER	PART NUMBER	PART NAME	QTY		
DF4/5/6 ('02-'10)	17400-91860	17400-98661-000	KIT, WATER PUMP REPAIR	1		
		09168-10022-000	GASKET(10X17X1.5)	3		
		09204-03003-000	PIN	1		
		09482-00299-000	PLUG,SPARK(BPR6ES)	1		
		15410-98500-000	FILTER,FUEL	1		
		17412-91JL0-000	PANEL,WATER PUMP CASE UPR	1		
		17413-91JL0-000	SLEEVE,WATER PUMP CASE	1		
		55321-87J01-000	ANODE,PROTECTION	2		
DF4/5/6 ('11-'16)	17400-91830	17400-98661-000	KIT, WATER PUMP REPAIR	1		
		09168-10022-000	GASKET(10X17X1.5)	3		
		09204-03003-000	PIN	1		
		09482-00L04-000	PLUG,SPARK(CPR6EA-9)	1		
		15410-98500-000	FILTER,FUEL	1		
		17412-91JL0-000	PANEL,WATER PUMP CASE UPR	1		
		17413-91JL0-000	SLEEVE,WATER PUMP CASE	1		
		55321-87J01-000	ANODE,PROTECTION	2		
DF4A/5A/6A P01 DF4A/6A P03 ('17-)	17400-91891	17400-98661-000	KIT, WATER PUMP REPAIR	1		
		09168-12017-000	GASKET(12X17X1)	1		
		09204-03003-000	PIN	1		
		09280-39002-000	O RING(D:2, ID:38.5)	1		
		09482-00L04-000	PLUG,SPARK(CPR6EA-9)	1		
		16510-16H11-000	FILTER,ENGINE OIL	1		
		17412-91JL0-000	PANEL,WATER PUMP CASE UPR	1		
		17413-91JL0-000	SLEEVE,WATER PUMP CASE	1		
		44330-13H00-000	FILTER,FUEL	1		
		55321-87J01-000	ANODE,PROTECTION	1		
		55321-95J00-000	ANODE,PROTECTION	2		
		59178-97J00-000	GASKET,DRAIN PLUG	2		
		17400-99J01-000	KIT,WATER PUMP REPAIR	1		
		09168-12017-000	GASKET(12X17X1)	1		
		09204-02004-000	PIN	1		
		DF8A/9.9A ('10-)	17400-99840	17400-99J01-000	KIT,WATER PUMP REPAIR	1
09168-12017-000	GASKET(12X17X1)			1		
09204-02004-000	PIN			1		
09280-13004-000	O RING(D:1.9, ID:13)			1		
09280-22019-000	O RING(D:1.9, ID:21.8)			1		
09280-54001-000	O RING(D:2.4, ID:52.6)			1		
09482-00528-000	PLUG,SPARK(CR6E)			2		
15410-98500-000	FILTER,FUEL			1		
16510-45H10-000	FILTER ASSY,ENG OIL			1		
17413-94J00-000	SLEEVE,WATER PUMP CASE			1		
55321-87J01-000	ANODE,PROTECTION			2		
59178-97J00-000	GASKET,DRAIN PLUG			2		
17400-94J00-000	KIT, WATER PUMP REPAIR			1		
09168-10022-000	GASKET(10X17X1.5)			2		
09168-12017-000	GASKET(12X17X1)			1		
DF9,9/15 ('11-'13)	17400-94810			09204-02004-000	PIN	1
		09280-10013-000	O RING(D:2.4, ID:9.6)	1		
		09482-00L04-000	PLUG, SPARK(CPR6EA-9)	2		
		15410-98500-000	FILTER,FUEL	1		
		16510-45H10-000	FILTER ASSY,ENG OIL	1		
		17413-94J00-000	SLEEVE,WATER PUMP CASE	1		
		55321-90L00-000	ZINC,PROTECTION	1		
		55321-99E00-000	ANODE,PROTECTION	1		
		17400-99J01-000	KIT, WATER PUMP REPAIR	1		
		09168-12017-000	GASKET(12X17X1)	1		
		09204-02004-000	PIN	1		
		09280-13004-000	O RING(D:1.9, ID:13)	1		
		09280-22019-000	O RING(D:1.9, ID:21.8)	1		
		09280-54001-000	O RING(D:2.4, ID:52.6)	1		
		09482-00661-000	PLUG,SPARK(MR6K-9)	2		
		DF9,9B/15A/20A ('13-)	17400-89811	15410-87L00-000	FILTER,FUEL	1
16510-45H10-000	FILTER ASSY,ENG OIL			1		
17413-94J00-000	SLEEVE,WATER PUMP CASE			1		
55321-87J01-000	ANODE,PROTECTION			2		
59178-97J00-000	GASKET,DRAIN PLUG			2		
17400-95J03-000	KIT, WATER PUMP REPAIR			1		
09168-10022-000	GASKET(10X17X1.5)			2		
09168-12012-000	GASKET(12.5X20X2.5)			1		
09204-03003-000	PIN			1		
09280-10013-000	O RING(D:2.4, ID:9.6)			2		
09280-22019-000	O RING(D:1.9, ID:21.8)			1		
09482-00427-000	PLUG,SPARK(NGK,BKR6E)			2		
15410-87J30-000	FILTER,FUEL			1		
16510-87J01-000	FILTER ASSY,OIL			1		
17413-95J00-000	SLEEVE,WATER PUMP CASE			1		
DF20/25 V2 ('06-)	17400-95872			55321-87J01-000	ANODE,PROTECTION	5
		55321-95J00-000	ANODE,PROTECTION	2		
		17400-96354-000	KIT, WATER PUMP REPAIR	1		
		09168-10022-000	GASKET(10X17X1.5)	2		
		09168-12012-000	GASKET(12.5X20X2.5)	1		
		09204-03003-000	PIN	1		
		09280-10013-000	O RING(D:2.4, ID:9.6)	2		
		09280-22019-000	O RING(D:1.9, ID:21.8)	1		
		09482-00427-000	PLUG,SPARK(NGK,BKR6E)	2		
		15410-87J30-000	FILTER,FUEL	1		
		16510-87J01-000	FILTER ASSY,OIL	1		
		17413-95J00-000	SLEEVE,WATER PUMP CASE	1		
		55321-87J01-000	ANODE,PROTECTION	5		
		55321-95J00-000	ANODE,PROTECTION	2		
		DF25/30 ('01-'10)	17400-89822	17400-96354-000	KIT, WATER PUMP REPAIR	1
				09168-10022-000	GASKET(10X17X1.5)	2
09168-12012-000	GASKET(12.5X20X2.5)			1		
09204-03003-000	PIN			1		
09482-00446-000	PLUG,SPARK(NGK DCPR6E)			3		
11265-87E10-000	GASKET,PROTECTION COVER			1		
15410-87J10-000	FILTER,FUEL			1		
16510-87J01-000	FILTER ASSY,OIL			1		
55321-87J01-000	ANODE,PROTECTION			5		

MODEL YEAR	KIT PART NUMBER	PART NUMBER	PART NAME	QTY		
DF25A/30A ('15-)	17400-94824	17400-94L21-000	KIT, WATER PUMP REPAIR	1		
		09168-12017-000	GASKET(12X17X1)	1		
		09204-03003-000	PIN	1		
		09280-22019-000	O RING(D:1.9, ID:21.8)	1		
		09482-00661-000	PLUG,SPARK(MR6K-9)	3		
		15410-87L00-000	FILTER,FUEL	1		
		16510-87J01-000	FILTER ASSY,OIL	1		
		17413-94L00-000	SLEEVE,WATER PUMP CASE	1		
		55321-87J01-000	ANODE,PROTECTION	5		
		59178-97J00-000	GASKET,DRAIN PLUG	2		
		DF40/50 ('06LATE-'10)	17400-87822	17400-96354-000	KIT, WATER PUMP REPAIR	1
				09168-10022-000	GASKET(10X17X1.5)	2
09168-12012-000	GASKET(12.5X20X2.5)			1		
09204-03003-000	PIN			1		
09280-22019-000	O RING(D:1.9, ID:21.8)			2		
09482-00446-000	PLUG,SPARK(NGK DCPR6E)			3		
15410-87J30-000	FILTER,FUEL			1		
16510-87J01-000	FILTER ASSY,OIL			1		
55321-87J01-000	ANODE,PROTECTION			2		
DF40A/50A/60A ('10-)	17400-88812			17400-88L01-000	KIT, WATER PUMP REPAIR	1
				09168-10022-000	GASKET(10X17X1.5)	2
				09168-12012-000	GASKET(12.5X20X2.5)	1
		09204-03003-000	PIN	1		
		09280-22019-000	O RING(D:1.9, ID:21.8)	2		
		09482-00446-000	PLUG,SPARK(NGK DCPR6E)	3		
		15410-88L00-000	FILTER,FUEL	1		
		16510-87J01-000	FILTER ASSY,OIL	1		
		55321-87J01-000	ANODE,PROTECTION	3		
		DF50A/60A ('14-)	17400-88822	17400-99E12-000	KIT, WATER PUMP REPAIR	1
				09168-10022-000	GASKET(10X17X1.5)	2
				09168-12012-000	GASKET(12.5X20X2.5)	1
09204-03003-000	PIN			1		
09280-22019-000	O RING(D:1.9, ID:21.8)			2		
09482-00446-000	PLUG,SPARK(NGK DCPR6E)			3		
15410-88L00-000	FILTER,FUEL			1		
16510-87J01-000	FILTER ASSY,OIL			1		
55321-87J01-000	ANODE,PROTECTION			3		
DF60 ('09LATE-'09END)	17400-99852			17400-99E12-000	KIT, WATER PUMP REPAIR	1
				09168-10022-000	GASKET(10X17X1.5)	2
				09168-12012-000	GASKET(12.5X20X2.5)	1
		09204-03003-000	PIN	1		
		09482-00299-000	PLUG,SPARK(BPR6ES)	4		
		11265-87E10-000	GASKET,PROTECTION COVER	1		
		15410-87J30-000	FILTER,FUEL	1		
		16510-87J01-000	FILTER ASSY,OIL	1		
		55321-87J01-000	ANODE,PROTECTION	1		
		DF60/70 ('07)	17400-99871	17400-87E04-000	KIT, WATER PUMP REPAIR	1
				09168-10022-000	GASKET(10X17X1.5)	2
				09168-12012-000	GASKET(12.5X20X2.5)	1
09204-03003-000	PIN			1		
09482-00299-000	PLUG,SPARK(BPR6ES)			4		
11265-87E10-000	GASKET,PROTECTION COVER			1		
15410-87J30-000	FILTER,FUEL			1		
16510-87J01-000	FILTER ASSY,OIL			1		
55321-87J01-000	ANODE,PROTECTION			1		
DF60/70 ('08-'09 EARLY)	17400-99861			17400-99E01-000	KIT, WATER PUMP REPAIR	1
				09168-10022-000	GASKET(10X17X1.5)	2
				09168-12012-000	GASKET(12.5X20X2.5)	1
		09204-03003-000	PIN	1		
		09482-00299-000	PLUG,SPARK(BPR6ES)	4		
		11265-87E10-000	GASKET,PROTECTION COVER	1		
		15410-87J30-000	FILTER,FUEL	1		
		16510-87J01-000	FILTER ASSY,OIL	1		
		17413-99E11-000	SLEEVE,WATER PUMP CASE	1		
		DF70A/80A/90A ('09-)	17400-87813	17400-87L04-000	KIT, WATER PUMP REPAIR	1
				09168-10038-000	GASKET(9.5X16.5X2)	2
				09168-12012-000	GASKET(12.5X20	



